

Synthetic/biopolymer grinding applications using IQ MILL-2070 (Ver. 1.8)



Cryogenic Mill
IQ MILL-2070

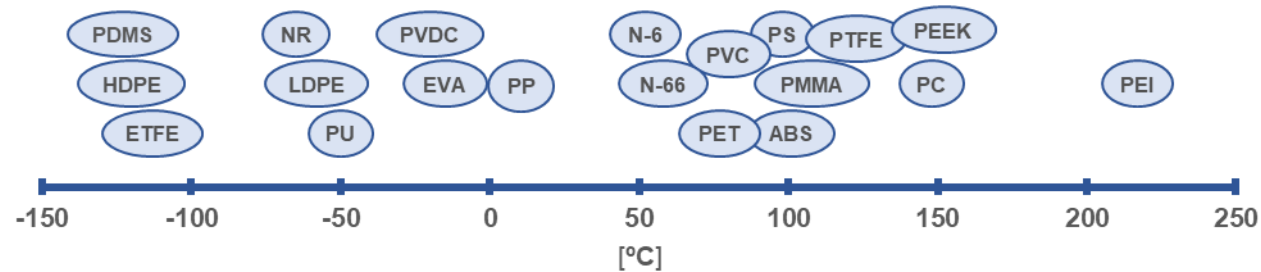
List of grinding applications for synthetic polymers

Use the numbers to bring you straight to the corresponding page.

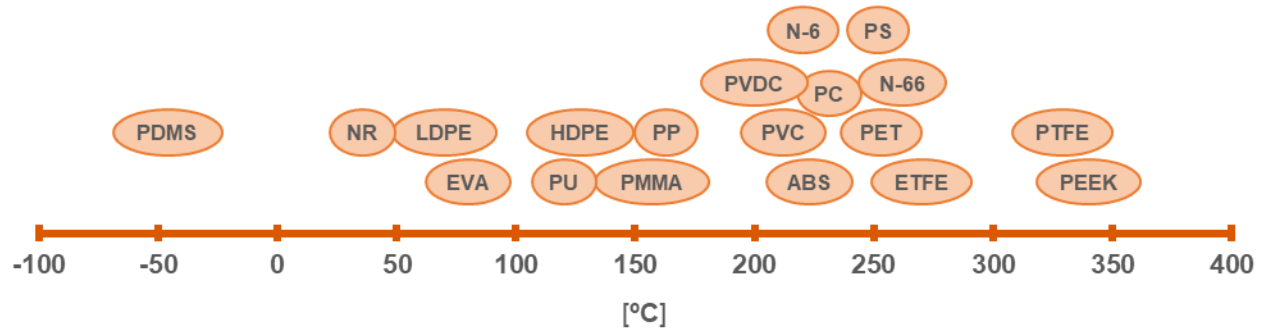
Synthetic polymers		
No.	Sample name	Abbrev.
IQ MILL_Poly_001	High density polyethylene	HDPE
IQ MILL_Poly_002	Low density polyethylene	LDPE
IQ MILL_Poly_003	Polypropylene	PP
IQ MILL_Poly_004	Polystyrene	PS
IQ MILL_Poly_005	Polycarbonate	PC
IQ MILL_Poly_006	Polyvinyl chloride	PVC
IQ MILL_Poly_007	Polyvinylidene chloride	PVDC
IQ MILL_Poly_008	Acrylonitrile butadiene styrene copolymer	ABS
IQ MILL_Poly_009	Silicone rubber	PDMS
IQ MILL_Poly_010	Polymethyl methacrylate	PMMA
IQ MILL_Poly_011	Polyisoprene (natural rubber)	NR
IQ MILL_Poly_012	Ethylene-vinyl acetate copolymer	EVA
IQ MILL_Poly_013	Polyethylene terephthalate	PET
IQ MILL_Poly_014	Polytetrafluoroethylene	PTFE
IQ MILL_Poly_015	Ethylene tetrafluoroethylene copolymer	ETFE
IQ MILL_Poly_016	Nylon 6	N-6
IQ MILL_Poly_017	Nylon 6,6	N-66
IQ MILL_Poly_018	Polyurethane	PU
IQ MILL_Poly_019	Polyetheretherketone	PEEK
IQ MILL_Poly_020	Polyetherimide	PEI

< 20 typical synthetic polymers >

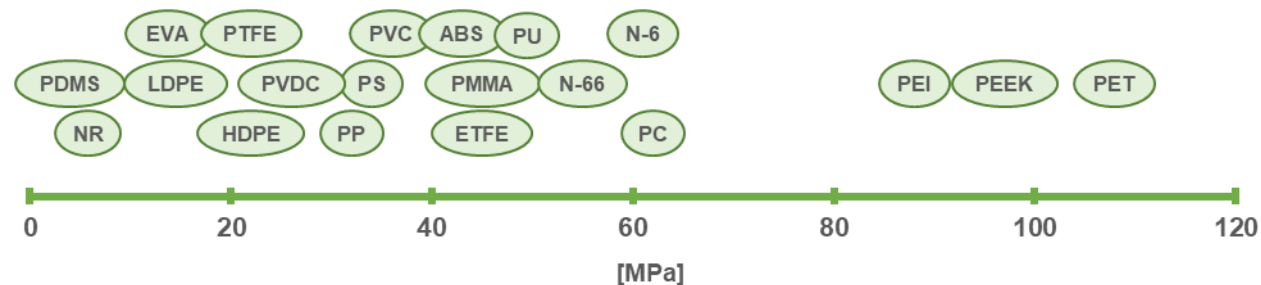
Glass transition temperature [T_g]



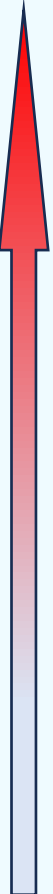
Melting point [M_p]











Tensile strength [TS]



Difficulties of Synthetic polymers

Difficulties	Synthetic polymers	Abbrev.	Brittle Temp. ¹⁾²⁾ (°C)	Pulverization	Sample container	Grinder	Pulverization	Amount	Speed	Run	Pause	Cycles
					L-Ti	ROD-SS-12Φ	Cryo.	[g]	[rpm]	[s]	[s]	[cycles]
	Polytetrafluoroethylene	PTFE	-250	◎	L-Ti	ROD-SS-12Φ	Cryo.	0.5	3000	30	0	1
	Polycarbonate	PC	-135	◎								
	Ethylene-vinyl acetate copolymer	EVA	-100	◎								
	High density polyethylene	PE-HD	-100	◎								
	Low density polyethylene	PE-LD	-60~80	◎								
	Polyisoprene (natural rubber)	NR	-60~-40	◎								
	Silicone rubber	PDMS	-70	◎								
	Polyurethane	PU	-70~100	◎								
	Nylon 6,6	N-66	-50	◎								
	Nylon 6	N-6	-40	◎								
	Polyetheretherketone	PEEK	-15~20	◎								
	Polyvinyl chloride	PVC	-20	◎								
	Acrylonitrile butadiene styrene copolymer	ABS	-20	◎								
	Polypropylene	PP	0	◎								
	Polystyrene	PS	20	◎								
Polyethylene terephthalate	PET	70~90	◎									
Polymethyl methacrylate	PMMA	110	◎									
Polyetherimide	PEI	170	◎									

PTFE		→	
PC		→	
NR		→	
PEEK		→	



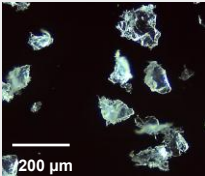
List of grinding applications for synthetic polymers

Use the numbers to bring you straight to the corresponding page.

Synthetic polymers

No.	Sample name	Abbrev.
IQ MILL_Poly_021	Copy paper	Paper
IQ MILL_Poly_022	Electronic circuit boards	Board
IQ MILL_Poly_023	Foamed polystyrene	PS
IQ MILL_Poly_024	Polyethylene (PE) form	PE
IQ MILL_Poly_025	Low density polyethylene film	LLDPE
IQ MILL_Poly_026	Polyamide fiber	PA
IQ MILL_Poly_027	Nitril glove	-
IQ MILL_Poly_028	Styrene-butadiene rubber	SBR
IQ MILL_Poly_029	Cardboard	-

Application example

<u>No.</u>	<u>Sample name</u> (Abbrev.) <u>Sample amount</u>	<u>Before</u>	<u>Conditions</u>	<u>After</u>	<u>Photomicrograph</u>
IQ MILL_Poly_002	Polyethylene (LDPE) 0.48 g		3000 rpm x 30 sec Cryogenic grinding x 2 repetition		

List of grinding applications for biopolymers

Biopolymers

No.	Sample name
IQ MILL_Bio_001-1	Boar canines (Teeth)
IQ MILL_Bio_001-2	Fox, raccoon, raccoon dog (Teeth)
IQ MILL_Bio_002	Shellfish
IQ MILL_Bio_003	Bark of moso bamboo
IQ MILL_Bio_004	Hemp cord
IQ MILL_Bio_005	Wood chip
IQ MILL_Bio_006	Cotton
IQ MILL_Bio_007	Dried squid
IQ MILL_Bio_008	Beef jerky
IQ MILL_Bio_009	Shell string
IQ MILL_Bio_010	Sea squirt

Biopolymers

No.	Sample name
IQ MILL_Bio_011	Seaweed stem (Wakame)
IQ MILL_Bio_012-1	Almond seed (Shell)
IQ MILL_Bio_012-2	Almond seed (Edible part)
IQ MILL_Bio_013	Candy
IQ MILL_Bio_014	Leaves of houseplants

Application example

No.

Sample name
Sample amount

Before

Conditions

After

Photomicrograph

[IQ MILL_Bio_012-1](#)

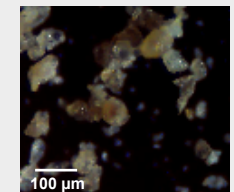
Almond seed (shell)
0.93 g



2800 rpm x 30 sec

Room temp. grinding



x 1 cycle



Use the numbers to bring you straight to the corresponding page.

Inorganic materials	
No.	Sample name
IQ MILL_Inorg_001	Teacup
IQ MILL_Inorg_002	Fused quartz
IQ MILL_Inorg_003	Sand
IQ MILL_Inorg_004	Ceramic (Al ₂ O ₃)

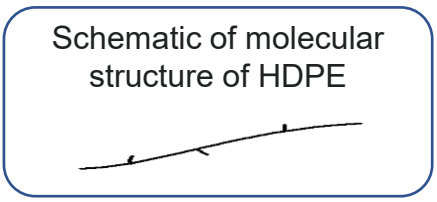
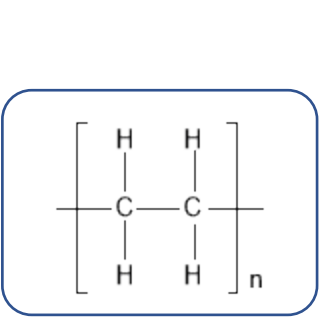
Application example

<u>No.</u>	<u>Sample name</u> <u>Sample amount</u>	<u>Before</u>	<u>Conditions</u>	<u>After</u>
IQ MILL_Inorg_002	Fused quartz 1.0 g		2000 rpm x 40 sec Room temp. grinding → x 1 cycle	

High density polyethylene (HDPE) [Cryomilling]

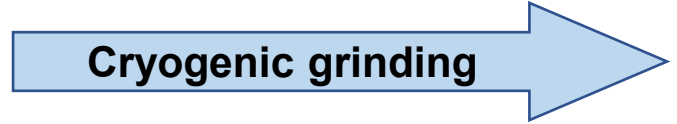
Characteristics: HDPE or PE-HD is a crystalline thermoplastic resin consisting of linearly bonded repeating units of ethylene with few branches. It is also called rigid polyethylene because of its hardness compared to other polyethylene (PE).

Application: Films and sheets such as shopping bags, blue sheets, etc., also fibers that have been strengthened by stretching (fishnets, screen doors, leisure sheets, etc.).



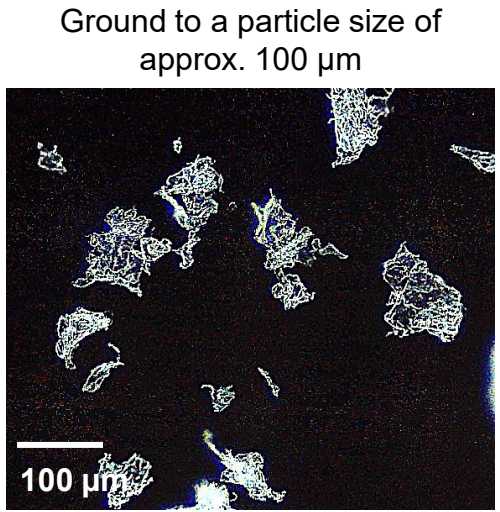
HDPE 0.48 g
Pretreatment: Cut in half with nippers

Sample amount (g)	Room temp. /Cryogenic	Sample container	Grinding ball
0.48	Cryogenic	Sample container L-Ti	WC-12Φ

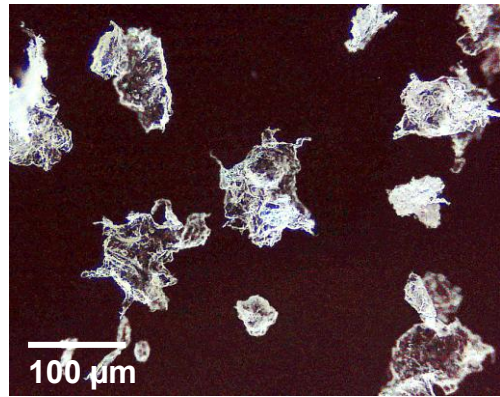


Grinding conditions				No. of repetitions ¹⁾
Milling speed (rpm)	Grinding time (sec)	Pause time (sec)	No. of cycles (Cycle)	
2500/3000	20	0	1	6

Grinding conditions:
2500 rpm
(<40 mesh²⁾, Yield: 55 %



Grinding conditions:
3000 rpm
(<40 mesh, Yield: 68 %)



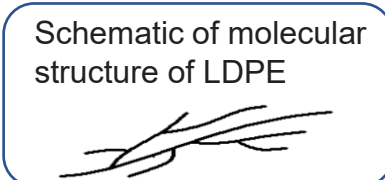
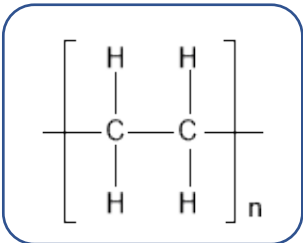
1) Immersion in liquid nitrogen followed by grinding is considered one repetition. The initial immersion time in liquid nitrogen is 10 minutes, while subsequent immersion times are 5 minutes.

2) 40 mesh= 0.42 mm opening

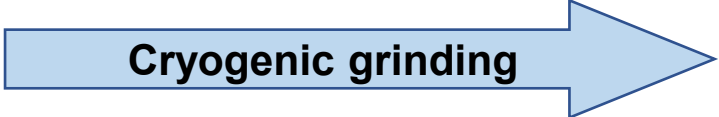
Low density polyethylene (LDPE) [Cryomilling]

Characteristics: Low density polyethylene (LDPE) is a synthetic resin consisting of randomly branched repeating units of ethylene. It is also called soft polyethylene because of its softness compared to other polyethylenes, or high-pressure polyethylene because of its manufacturing process.

Application: Packaging materials (simple packaging for confectionery and clothing, garbage bags, packaging for fresh food, cushioning materials), black agricultural film, sanitary gloves, watering hoses, Tupperware, etc.



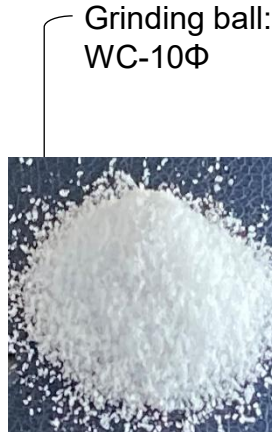
Sample amount (g)	Room temp. /Cryogenic	Sample container	Grinding ball
0.48	Cryogenic	Sample container L-Ti	WC-10Φ/12Φ



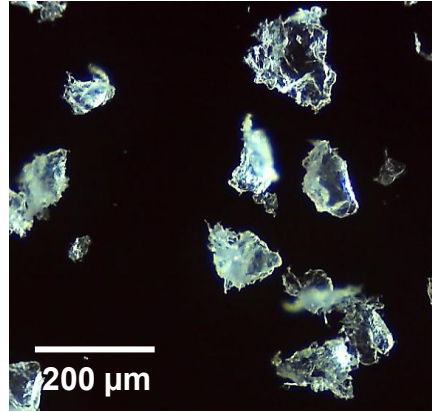
Grinding conditions				No. of repetitions
Milling speed (rpm)	Grinding time (sec)	Pause time (sec)	No. of cycles (Cycle)	
2500/3000	30	0	1	2



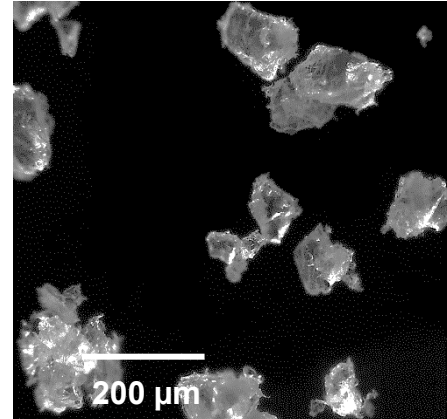
LDPE 0.48 g



Ground to a particle size of approx. 100-200 μm (<40 mesh, yield: 85 %)



Ground to a particle size of approx. 100-200 μm (<40 mesh, yield: 78 %)

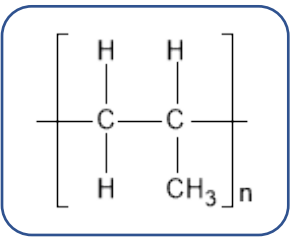


* 40 mesh= 0.42 mm opening

Polypropylene (PP) [Cryomilling]

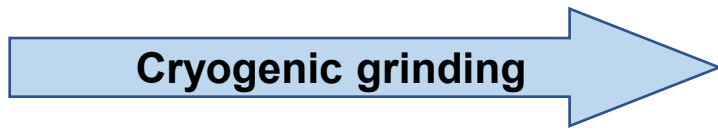
Characteristics: Nylon 6,6 is a polyamide with higher heat resistance and mechanical strength than nylon 6, with a melting point around 265 °C and specific gravity of 1.14. It is one of the strongest materials among engineering plastics. In addition to heat resistance, it has excellent oil resistance, wear resistance, and lubricating properties.

Application: Textiles for clothing, airbags, bearings, liners, rollers, gears, insulating parts, etc.



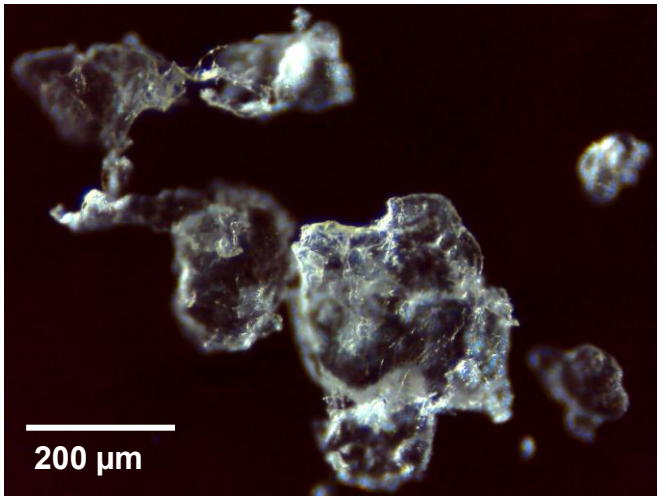
PP 0.61 g

Sample amount (g)	Room temp. /Cryogenic	Sample container	Grinding ball
0.58	Cryogenic	Sample container L-Ti	WC-12Φ

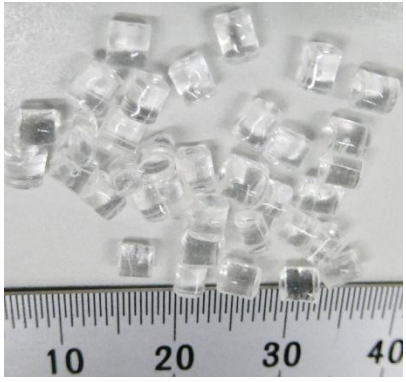
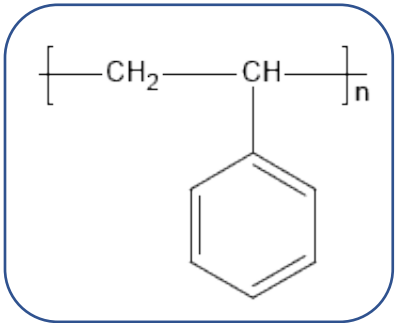


Grinding conditions				No. of repetitions
Milling speed	Grinding time	Pause time	No. of cycles	
(rpm)	(sec)	(sec)	(Cycle)	
2800	30	0	1	2

Ground to a particle size of about 100-200 μm (<40 mesh, yield: 88 %)



*40 mesh= 0.42 mm opening

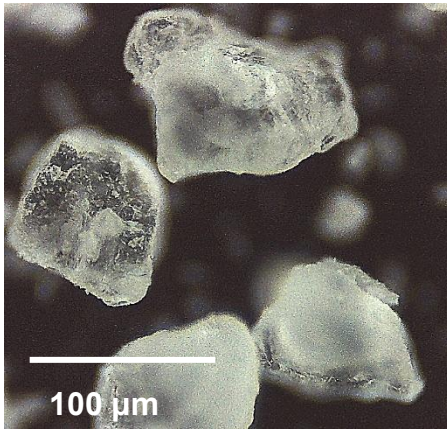


PS 1.0 g



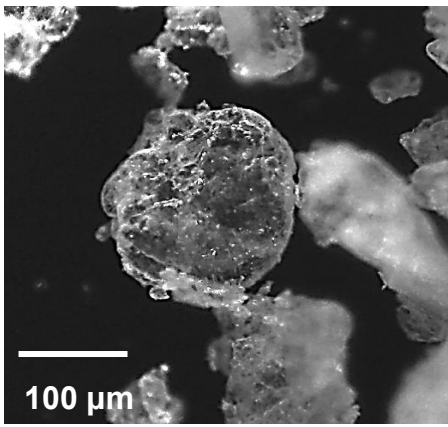
Cryogenic grinding (-196 °C)

Grinding time: 30 sec Pause: 10sec
 No. of cycles : 2 Repetition: 1
 Yield (> 40 mesh : 0 %)
 (40-60 mesh : 4.8 %)
 (< 60 mesh : 95.2 %)



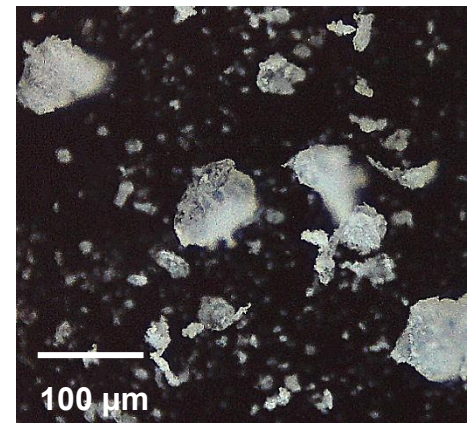
Room temp. dry (23 °C)

Grinding time: 30 sec Pause: 60sec
 No. of cycles : 10 Repetition: 2
 Yield (> 40 mesh : 6.0 %)
 (40-60 mesh : 19.3 %)
 (< 60 mesh : 74.7 %)



Room temp. wet (23 °C, methanol 1.5 mL)

Grinding time: 30 sec Pause: 60sec
 No. of cycles : 10 Repetition: 2
 Yield (> 40 mesh : 0.2 %)
 (40-60 mesh : 5.4 %)
 (< 60 mesh : 94.4 %)



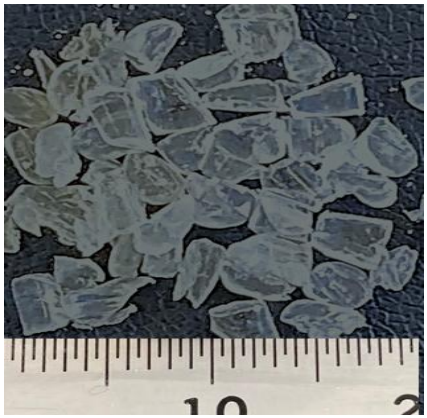
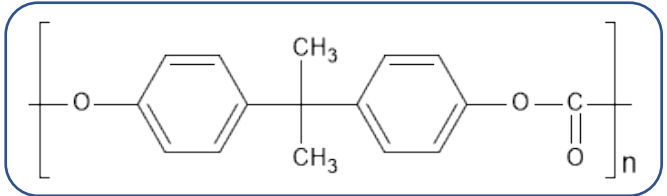
1) 40 mesh= 0.42 mm opening, 60 mesh= 0.25 mm opening

- In cryogenic grinding, the particle size is about 100 µm.
- In room temperature dry grinding, the particle size is mainly about 100 µm. (The particles cannot be smaller than this due to aggregation caused by static electricity.)
- In room temperature dry grinding, the sample container and grinding ball heat is dissipated at Pause time of 60 sec, but when Pause time is 0 sec, the PS particles are heated by the impact of the sample container and the Grinding ball and clump together.
- In room temperature wet grinding with methanol, particles of 10 µm-50 µm were observed. This may be due to the relaxation of the charges between particles by methanol.

Sample amount (g)	Room temp./Cryogenic	Sample container	Grinding ball	Milling speed	Grinding time	Pause time	No. of cycles	No. of repetitions ²⁾
				(rpm)	(sec)	(sec)	(Cycle)	
1.0	Room temp.(dry/wet) Cryogenic	Sample container L-Ti	Zr-12Φ	2800	30	60 / 0	10 / 1	2 / 1

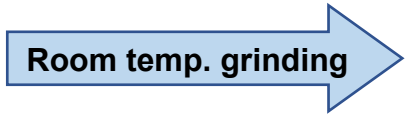
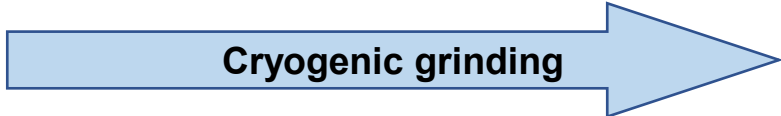
Polycarbonate (PC) [Cryomilling/Room temp. milling]

Characteristics: Polycarbonate resin (PC) is an engineering plastic with high transparency, self-extinguishing properties, and the highest impact resistance of any plastic. With transparency comparable to that of glass, PC is also used in camera lenses.

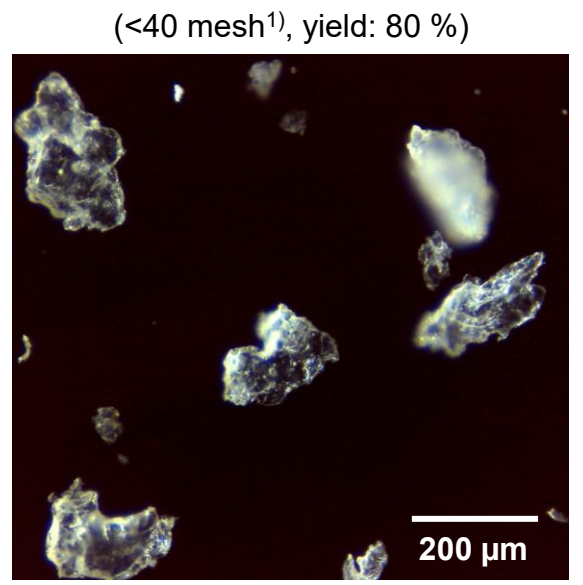


PC 0.5 g

Pretreatment: cut in half with nippers



(The same grinding conditions as Cryogenic grinding used. Although the sample was slightly ground, flat plates of about 0.2 mm in size were obtained. Also, the grinding ball became very hot.)



(<40 mesh¹⁾, yield: 80 %)

1) 40 mesh= 0.42 mm opening

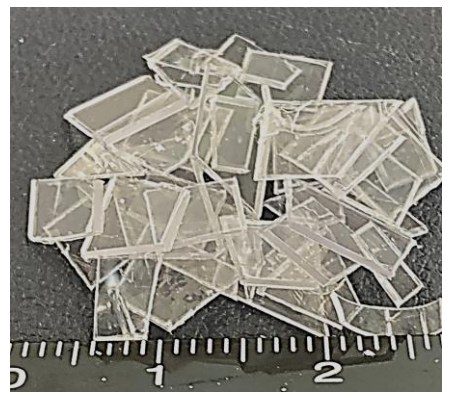
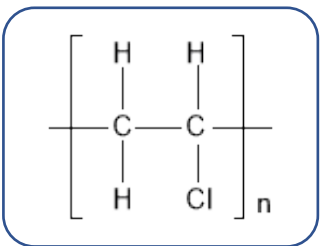
- In room temperature grinding, the impact of the grinding ball causes to raise the PC temperature, making the sample flat in shape and impossible to grind.
- In cryogenic grinding, particles of about 200 μm in size can be obtained.

Sample amount (g)	Room temp./Cryogenic	Sample container	Grinding ball	Milling speed	Grinding time	Pause time	No. of cycles	No. of repetitions ²⁾
				(rpm)	(sec)	(sec)	(Cycle)	
0.5	Room temp./Cryogenic	Sample container L-Ti	WC-12Φ	2800	30	10 / 0	10 / 1	2 / 2

2) Immersion in liquid nitrogen followed by grinding is considered one repetition. The initial immersion time in liquid nitrogen is 10 minutes, while subsequent immersion times are 5 minutes.

Characteristics: PVC (PVC) has excellent chemical resistance, corrosion resistance, and insulating properties, and is an inexpensive polymer among plastic materials. Although it is vulnerable to low and high temperatures, it is used in a wide range of applications because it is inexpensive for its many advantages.

Application: It is used for building materials such as water and sewage pipes and corrugated sheets, and leather for furniture. It is often found in familiar places.



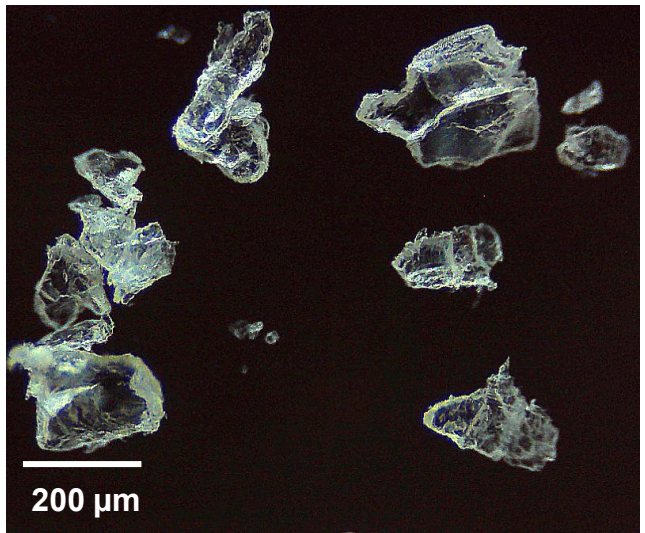
PVC thin plates 0.55 g

Sample amount (g)	Room temp. /Cryogenic	Sample container	Grinding ball
0.55	Cryogenic	Sample container L-Ti	WC-12Φ



Grinding conditions				No. of repetitions
Milling speed	Grinding time	Pause time	No. of cycles	
(rpm)	(sec)	(sec)	(Cycle)	
2800	20	0	1	1

(<40 mesh, yield: 100 %)

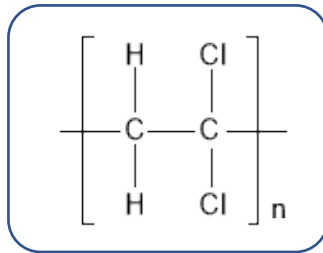


*40 mesh= 0.42 mm opening

Polyvinylidene chloride (PVDC) [Cryomilling]

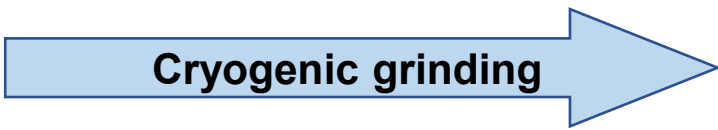
Characteristics: Polyvinylidene chloride (PVDC) features high barrier to block both oxygen and moisture. This is an outstanding feature not found in other plastics and resins.

Application: Typical applications for PVDC include food packaging films such as wraps, ham, and sausages. Because of its excellent barrier properties, it can prevent unpleasant odors mixed with food odors from filling refrigerators and can also delay oxidation of wrapped foods to prolong the life of the foods. It also has a high heat and tear resistances.



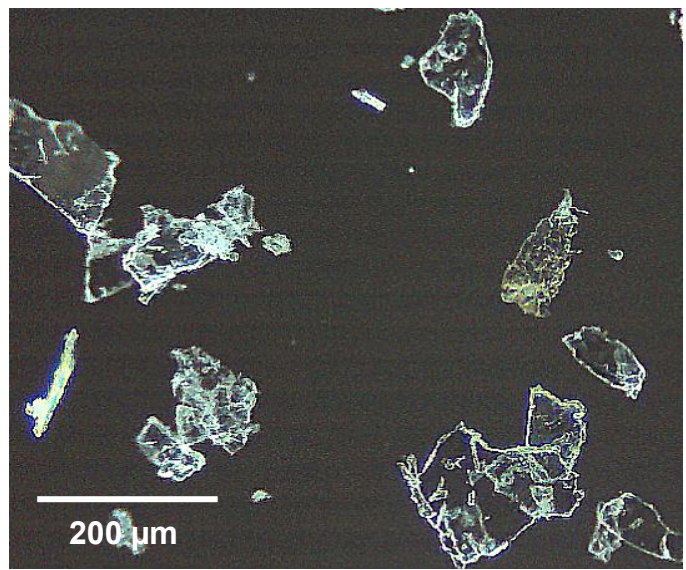
PVDC 0.38 g
(10 μm thick)

Sample amount (g)	Room temp. /Cryogenic	Sample container	Grinding ball
0.38	Cryogenic	Sample container L-Ti	WC-12Φ



Grinding conditions				No. of repetitions
Milling speed	Grinding time	Pause time	No. of cycles	
(rpm)	(sec)	(sec)	(Cycle)	
2800	30	0	1	1

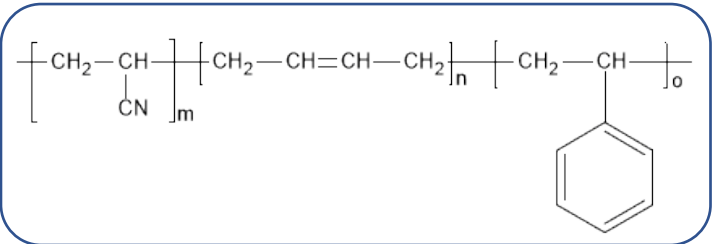
(<40 mesh, yield: 100 %)



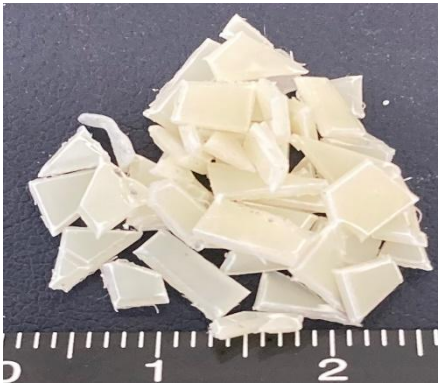
*40 mesh= 0.42 mm opening

Characteristics: ABS resin is a copolymer of acrylonitrile, butadiene, and styrene, and is a thermoplastic, amorphous general-purpose resin. The material color is light skin-colored, and it has an excellent balance of mechanical properties such as rigidity, hardness, workability, impact resistance, and bending fatigue.

Application: Mainly for various exterior, housing, and mechanical parts of home appliances and electrical and electronic products, interior parts such as automobile panels, stationery and miscellaneous goods, office furniture components, brush handles, etc.

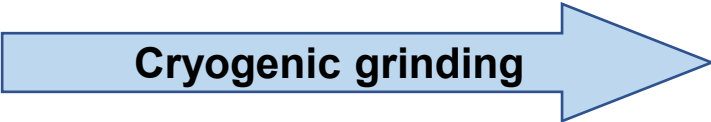


Ground to a particle size of approx. 100 μm (<60 mesh, yield: 91 %)

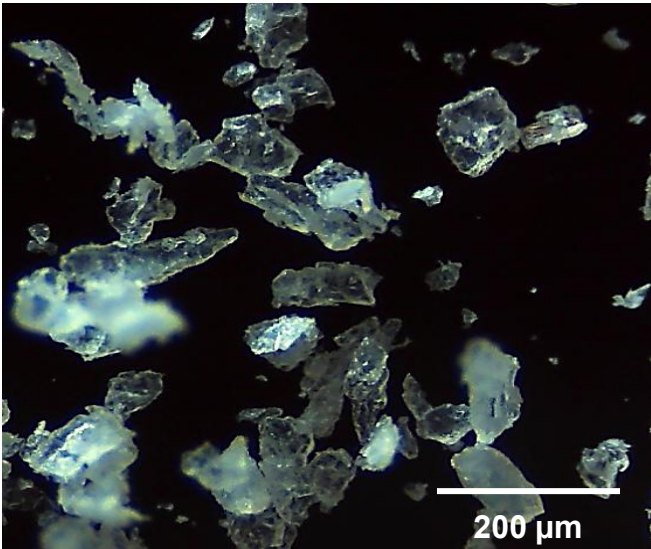


ABS 0.53 g

Sample amount (g)	Room temp. /Cryogenic	Sample container	Grinding ball
0.53	Cryogenic	Sample container L-Ti	WC-12Φ



Grinding conditions				No. of repetitions
Milling speed (rpm)	Grinding time (sec)	Pause time (sec)	No. of cycles (Cycle)	
2800	30	0	1	2

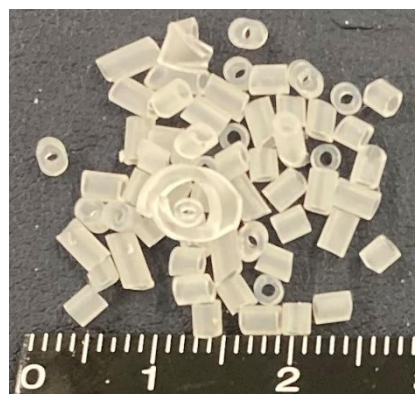
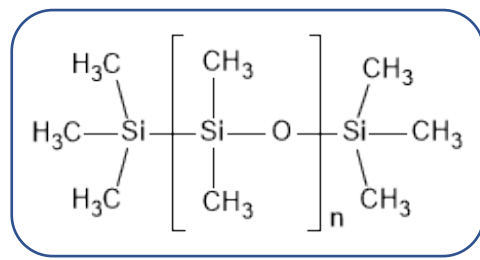


*60 mesh= 0.25 mm opening

Silicone resin (PDMS) [Cryomilling]

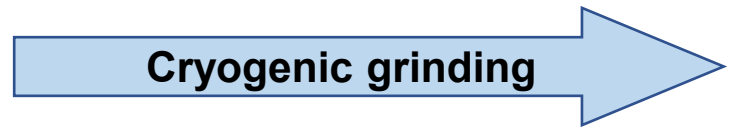
Characteristics: Silicone is a general term for synthetic polymer compounds that have a main skeleton of siloxane bonds. Generally, it is colorless, odorless, and has water repellency, and is oil resistant, oxidation resistant, and heat resistant compared to the corresponding carbon skeleton polymer. Since it has the properties of a metal oxide (base), it is weak against strong acids and easily deteriorates (bleaching, embrittlement).

Application: PDMS is used in a wide range of familiar and industrial applications, including contact lenses, medical devices, caulking agents, lubricants, and microfluidics.



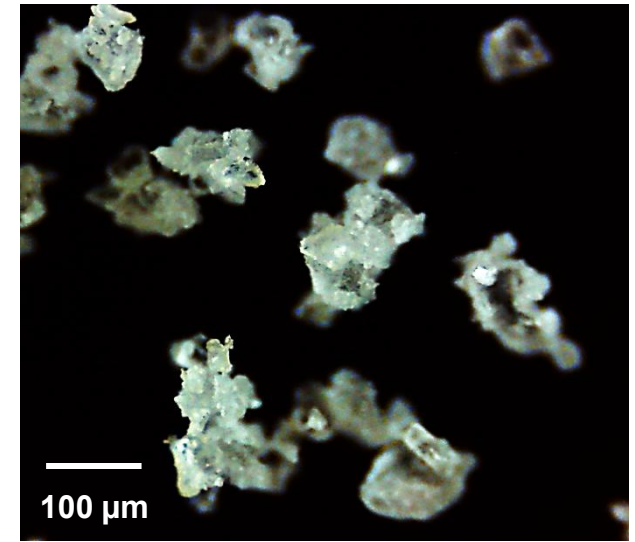
PDMS 0.55 g

Sample amount (g)	Room temp. /Cryogenic	Sample container	Grinding ball
0.55	Cryogenic	Sample container L-Ti	WC-12Φ



Grinding conditions				No. of repetitions
Milling speed	Grinding time	Pause time	No. of cycles	
(rpm)	(sec)	(sec)	(Cycle)	
2800	20	0	1	2

Ground to a particle size of approx. 100 μm (<40 mesh, yield: 71 %)

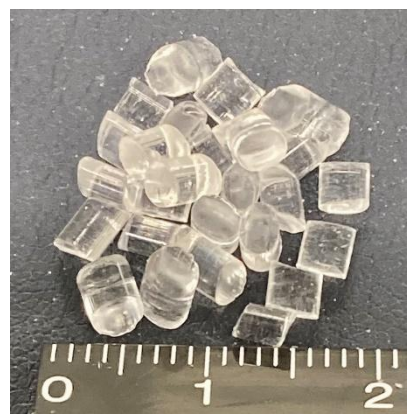
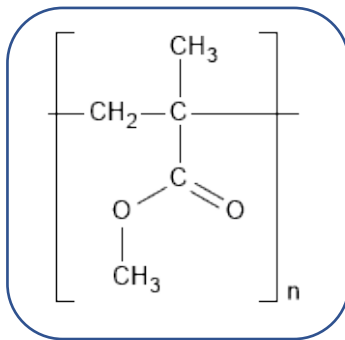


*40 mesh= 0.42 mm opening

Polymethyl methacrylate (PMMA) [Cryomilling]

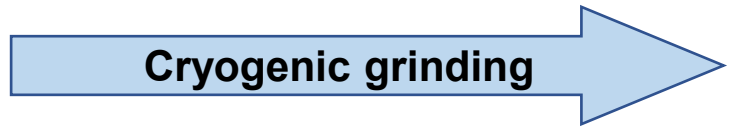
Characteristics: Polymethacrylic acid ester resin (acrylic resin) has high transparency and impact resistance and is easy to form and color thermoplastics.

Application: As a substitute for inorganic glass, it is used for windows of buildings and vehicles, lighting fixture covers, lantern signs, road signs, daily necessities, office supplies, crafts, watch crystals, etc.



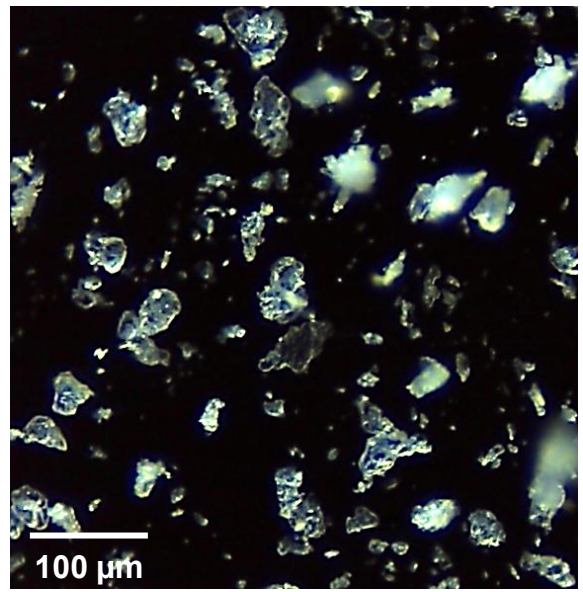
PMMA 0.58 g

Sample amount (g)	Room temp. /Cryogenic	Sample container	Grinding ball
0.58	Cryogenic	Sample container L-Ti	WC-12Φ



Grinding conditions				No. of repetitions
Milling speed	Grinding time	Pause time	No. of cycles	
(rpm)	(sec)	(sec)	(Cycle)	
2800	30	0	1	2

Ground to a particle size of approx. 10-50 μm (<60 mesh, yield: 95 %)

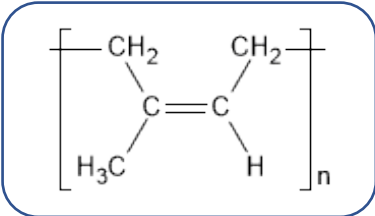


*60 mesh= 0.25 mm opening

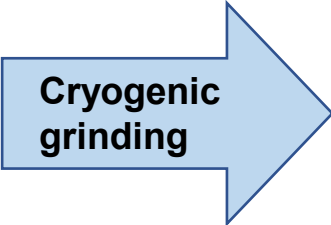
Natural rubber (NR) [Cryomilling]

Characteristics: A rubber refined from the sap of a rubber tree, it has excellent mechanical characteristics such as tensile strength, tear strength, and wear resistance, but is inferior in heat resistance, oil resistance, weather resistance, and ozone resistance.

Application: Tires, rubber belts, hoses, footwear, etc. .

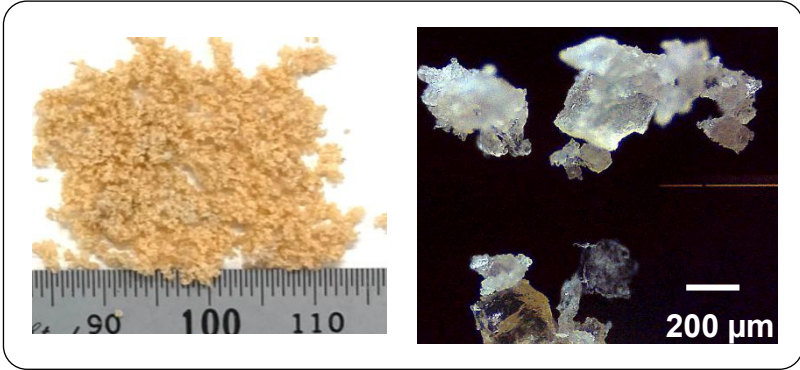
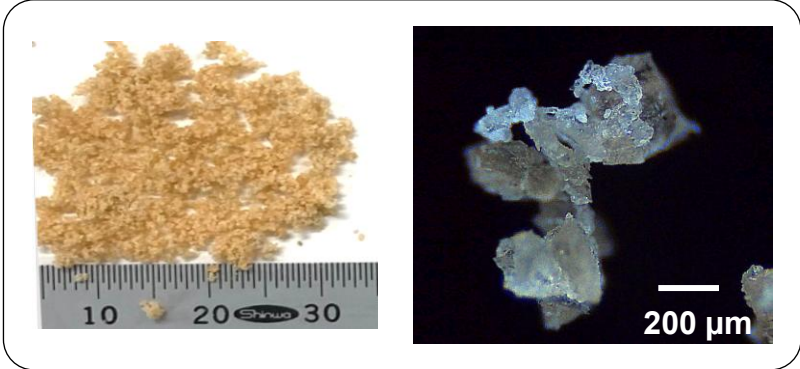


Rubber band 0.53 g



2500 rpm
x 10 sec
x 1

2500 rpm
x 20 sec
x 2



No significant difference was observed after two repetitions of Cryogenic grinding.

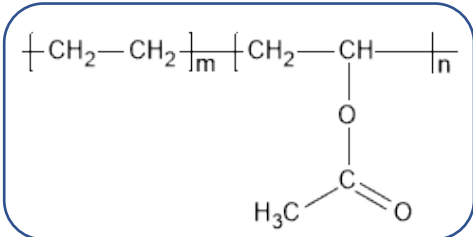
Sample amount (g)	Room temp./Cryogenic	Sample container	Grinding ball	Milling speed	Grinding time	Pause time	No. of cycles	No. of repetitions*
				(rpm)	(sec)	(sec)	(Cycle)	
0.53	Cryogenic	Sample container L-Ti	WC-12Φ	2500	10-20	0	1	1-2

* Immersion in liquid nitrogen followed by grinding is considered one repetition. The initial immersion time in liquid nitrogen is 10 minutes, while subsequent immersion times are 5 minutes.

Ethylene-vinyl acetate copolymer (EVA) [Cryomilling]

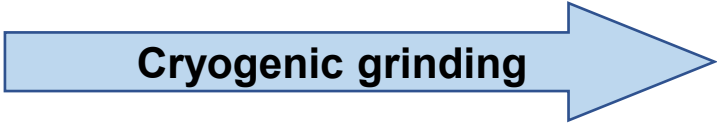
Characteristics: It has excellent low temperature properties, tear strength, impact strength, etc., is highly transparent, and has good appearance and luster. Moreover, it has a low specific density of 30 % or more compared to rubber and PVC, has excellent weather resistance, no ozone aging phenomenon, does not require a plasticizer, and is flexible and non-toxic.

Application: Used as a substitute for inorganic glass, it is used for building and vehicle windows, light fixture covers, lantern signs, road signs, daily necessities, office supplies, crafts, and watch windshields.



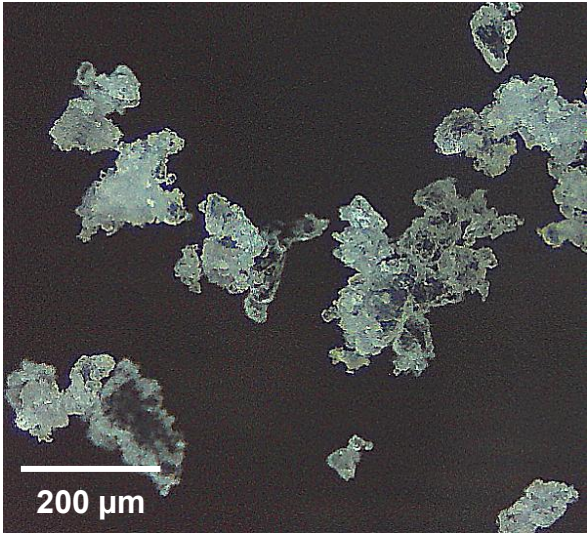
EVA 0.58 g

Sample amount (g)	Room temp. /Cryogenic	Sample container	Grinding ball
0.58	Cryogenic	Sample container L-Ti	WC-12Φ



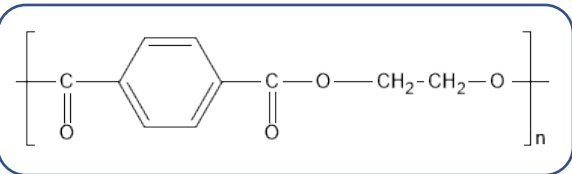
Grinding conditions				No. of repetitions
Milling speed	Grinding time	Pause time	No. of cycles	
(rpm)	(sec)	(sec)	(Cycle)	
2800	20	0	1	2

(<40 mesh, yield: 100 %)



*40 mesh= 0.42 mm opening

Polyethylene terephthalate (PET) [Cryomilling]

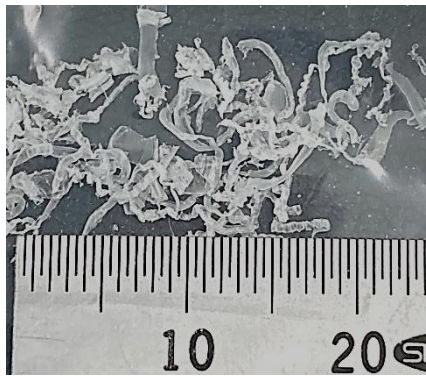


Sample: Three types of PET (cut pieces, 25 µm film, 250 µm film)

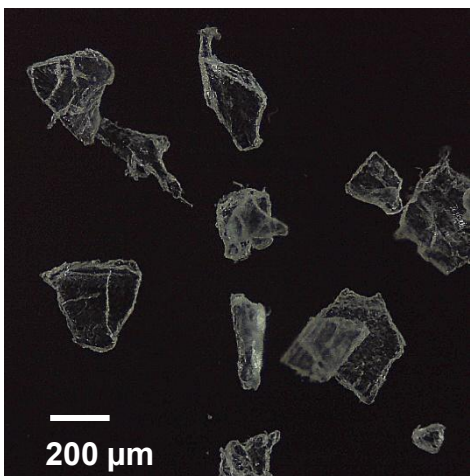
PET (cut pieces)

Approx. 0.6 g ground

(<40 mesh, yield: 100 %)



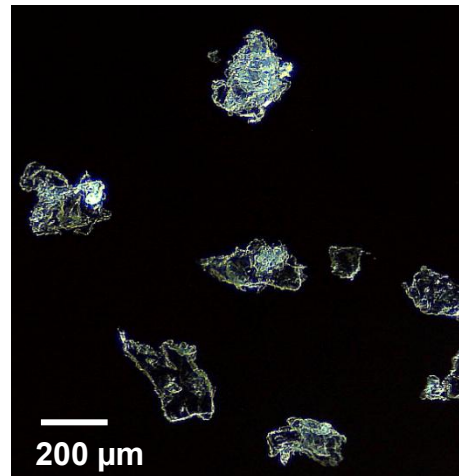
PET (Cut pieces) 0.58 g



PET (25 µm film)

Ground after cutting to 5x5 mm pieces

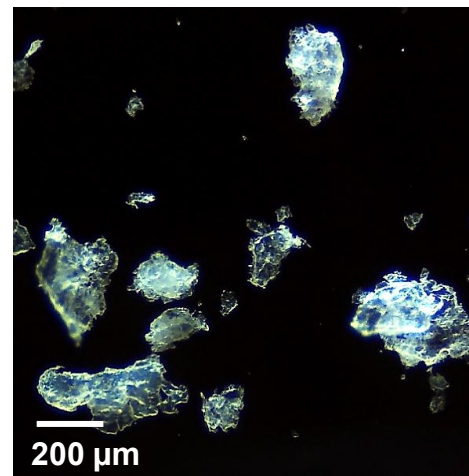
(<40 mesh, yield: 100 %)



PET (250 µm film)

Ground after cutting to 5x5 mm pieces

(<40 mesh, yield: 100 %)



*40 mesh= 0.42 mm opening

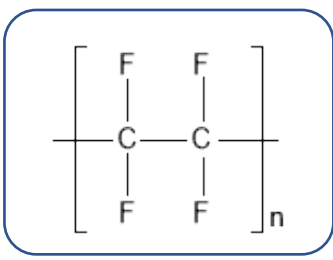
All three samples have similar particle shapes.

Sample amount (g)	Room temp./Cryogenic	Sample container	Grinding ball	Milling speed	Grinding time	Pause time	No. of cycles	No. of repetitions
				(rpm)	(sec)	(sec)	(Cycle)	
0.5 – 0.6	Cryogenic	Sample container L-Ti (PC insert tube)	WC-10Φ	2800	30	0	1	4

Polytetrafluoroethylene (PTFE) [Cryomilling]

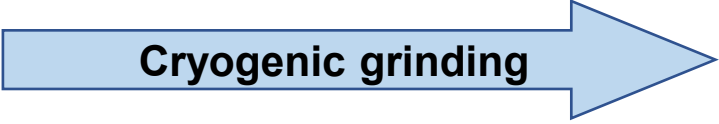
Characteristics: Polytetrafluoroethylene (PTFE) has excellent heat and chemical resistance and is insoluble in hydrofluoric acid, which is highly corrosive. It has the lowest coefficient of friction of any material discovered to date.

Application: Coated mainly on the surface of cooking utensils, especially metal cooking utensils such as frying pans and pots. Widely used as processing materials in electrical equipment and chemical-mechanical applications that handle high-temperature corrosive fluids.



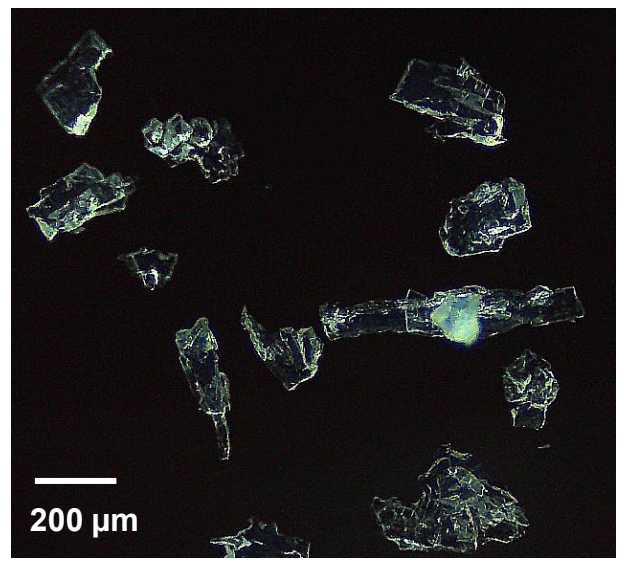
PTFE 0.58 g

Sample amount (g)	Room temp. /Cryogenic	Sample container	Grinding ball
0.58	Cryogenic	Sample container L-Ti	WC-12Φ



Grinding conditions				No. of repetitions
Milling speed	Grinding time	Pause time	No. of cycles	
(rpm)	(sec)	(sec)	(Cycle)	
2800	20	0	1	1

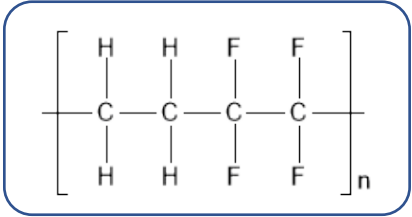
(<40 mesh, yield: 100 %)



*40 mesh= 0.42 mm opening

Characteristics: Polytetrafluoroethylene (PTFE) has excellent heat and chemical resistance and is insoluble in hydrofluoric acid, which is highly corrosive. It has the lowest coefficient of friction of any material discovered to date.

Application: Coated mainly on the surface of cooking utensils, especially metal cooking utensils such as frying pans and pots. Widely used as processing materials in electrical equipment and chemical-mechanical applications that handle high-temperature corrosive fluids.



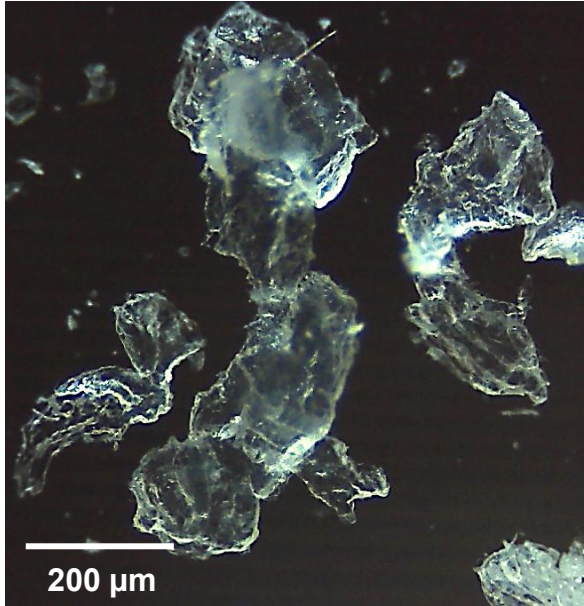
ETFE 0.58 g

Sample amount (g)	Room temp. /Cryogenic	Sample container	Grinding ball
0.58	Cryogenic	Sample container L-Ti	WC-12Φ



Grinding conditions				No. of repetitions ²⁾
Milling speed (rpm)	Grinding time (sec)	Pause time (sec)	No. of cycles (Cycle)	
2500	30	0	1	6

Ground to a particle size of approx. 200 μm (<40 mesh¹⁾, yield: 42 %)

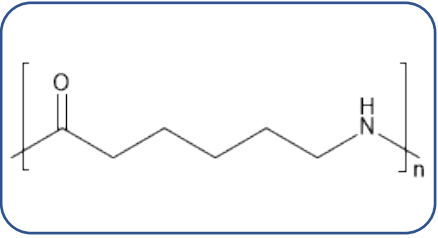


1) 40 mesh= 0.42 mm opening

2) Immersion in liquid nitrogen followed by grinding is considered one repetition. The initial immersion time in liquid nitrogen is 10 minutes, while subsequent immersion times are 5 minutes.

Characteristics: Nylon 6 fiber is tough and has high tensile strength, elasticity and luster. It is wrinkle and wear resistant and is resistant to chemicals such as acids and alkalis. It absorbs up to 2.4 % moisture but reduces tensile strength. Nylon 6 is generally white but can be dyed in a solution bath prior to fabrication.

Application: Textiles for clothing, bearings, liners, rollers, gears, insulating parts, food processing machine parts, packaging machine parts, etc.

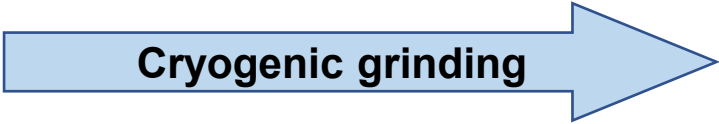


Ground to a particle size of approx. 100 - 200 μm (<40 mesh, yield: 94 %)

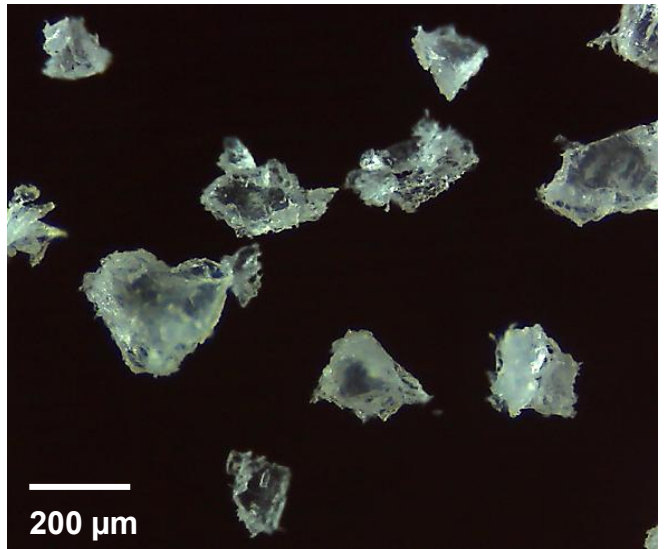


Nylon 6 0.56 g

Sample amount (g)	Room temp. /Cryogenic	Sample container	Grinding ball
0.56	Cryogenic	Sample container L-Ti	WC-12Φ



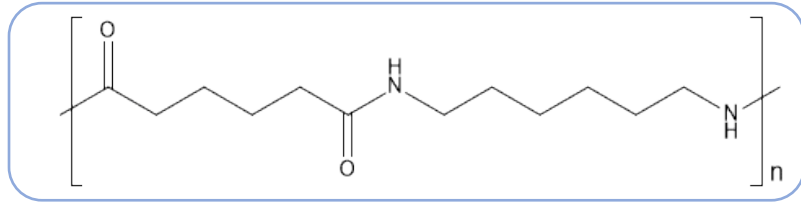
Grinding conditions				No. of repetitions
Milling speed (rpm)	Grinding time (sec)	Pause time (sec)	No. of cycles (Cycle)	
2800	20	0	1	2



*40 mesh= 0.42 mm opening

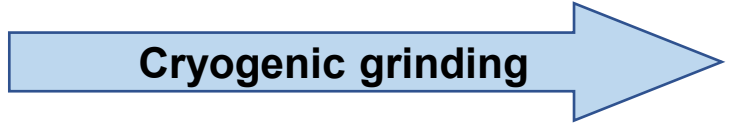
Characteristics: Nylon 6,6 is a polyamide with higher heat resistance and mechanical strength than nylon 6, with a melting point around 265 °C and specific gravity of 1.14. It is one of the strongest materials among engineering plastics. In addition to heat resistance, it has excellent oil resistance, wear resistance, and lubricating properties.

Application: Textiles for clothing, airbags, bearings, liners, rollers, gears, insulating parts, etc.



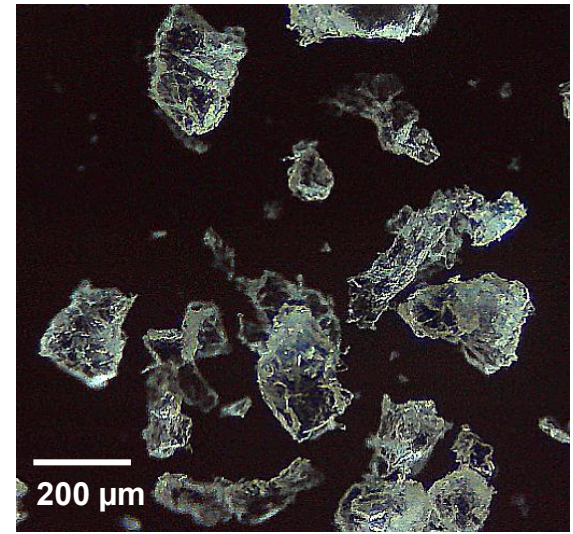
Nylon 6,6 0.58 g

Sample amount (g)	Room temp. /Cryogenic	Sample container	Grinding ball
0.58	Cryogenic	Sample container L-Ti	WC-12Φ



Grinding conditions				No. of repetitions
Milling speed (rpm)	Grinding time (sec)	Pause time (sec)	No. of cycles (Cycle)	
2800	30	0	1	2

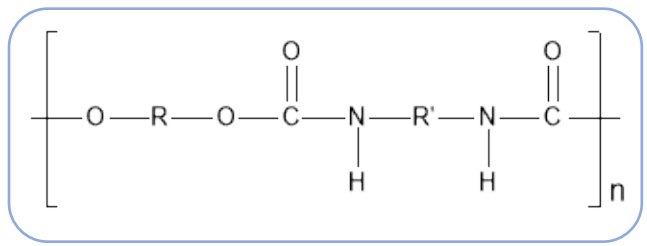
(<40 mesh, yield: 100 %)



*40 mesh= 0.42 mm opening

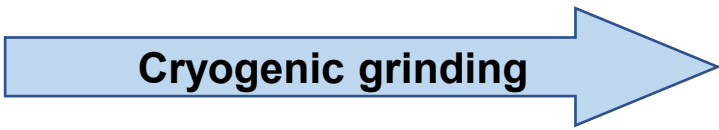
Characteristics: Excellent in wear resistance, impact resistance, oil resistance, and low-temperature properties. However, it does not have excellent heat resistance and is prone to degradation under high temperature and humidity.

Application: Paints, adhesives, sponges, sealants and caulking materials, fillers, heat insulators, soundproofing materials, textile products, footwear products, various automotive parts, etc.



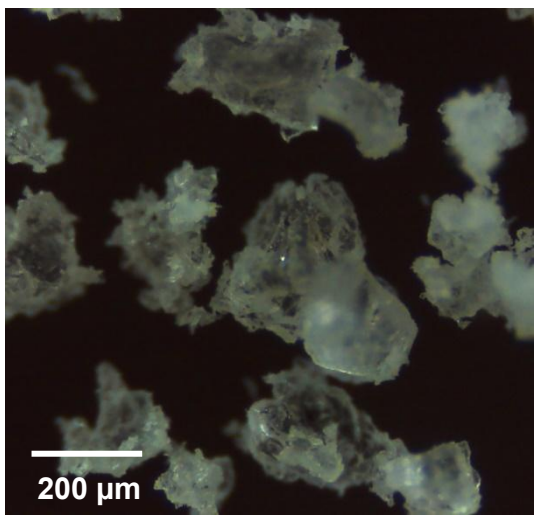
PU 0.55 g

Sample amount (g)	Room temp. /Cryogenic	Sample container	Grinding ball
0.55	Cryogenic	Sample container L-Ti	WC-12Φ



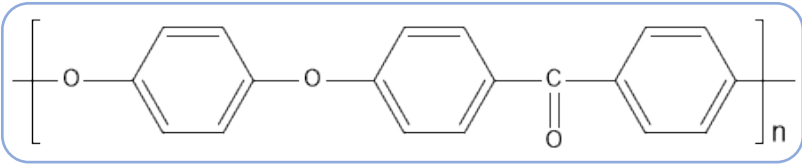
Grinding conditions				No. of repetitions
Milling speed	Grinding time	Pause time	No. of cycles	
(rpm)	(sec)	(sec)	(Cycle)	
2800	20	0	1	2

(<40 mesh, yield: 97 %)

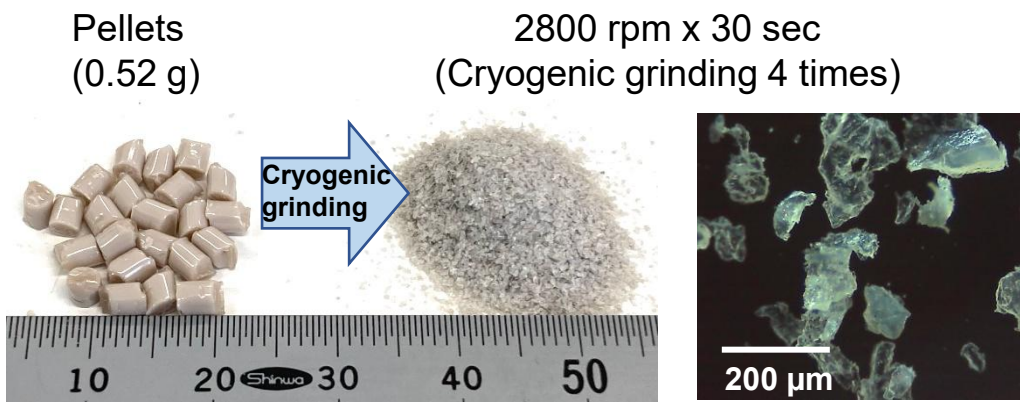
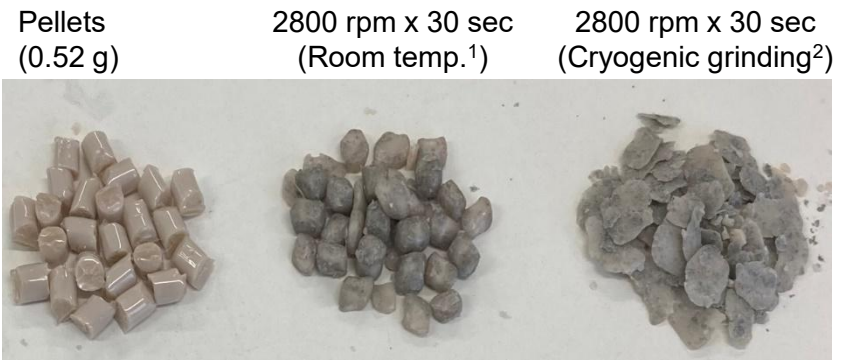


*40 mesh= 0.42 mm opening

Characteristics: This thermoplastic resin has very high thermal resistance (glass transition temperature of 143 °C and melting point of 343 °C). It also has excellent flame resistance, mechanical properties, fatigue resistance, abrasion resistance, dimensional stability, and processability, and can be processed by ordinary injection molding machines, or made into film or nonwoven fabric.



Sample: PEEK pellets (no pretreatment)



1. In room-temperature grinding, the whole sample turns blackish and can only be ground marginally.
2. At one cryogenic grinding, the pellets were deformed into small flakes.

- Cryogenic grinding was repeated four times to obtain finely ground particles of 40 mesh¹⁾ or less. Yield: 83 %.
- In addition, with 1 g of sample, less than 40 mesh was obtained by two additional repetitions of cryogenic grinding. Yield: 58 %.

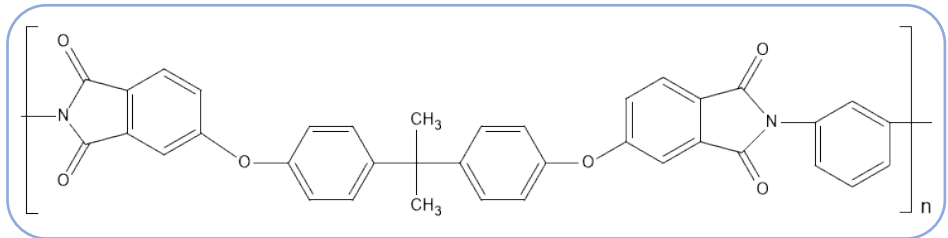
1) 40 mesh= 0.42 mm opening

Sample amount (g)	Room temp./Cryogenic	Sample container	Grinding ball	Milling speed	Grinding time	Pause time	No. of cycles	No. of repetitions ²⁾
				(rpm)	(sec)	(sec)	(Cycle)	
0.52	Room temp. / Cryogenic	Sample container L-Ti	WC-12Φ	2800	30	0	1	1-4

2) Immersion in liquid nitrogen followed by grinding is considered one repetition. The initial immersion time in liquid nitrogen is 10 minutes, while subsequent immersion times are 5 minutes.

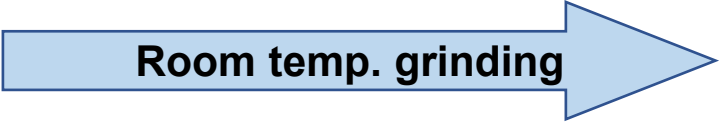
Characteristics: One of the super engineering polymers, it is flame retardant with excellent chemical resistance, water resistance, and thermal resistance. Even if it were to burn, it would generate little smoke. It also has excellent electrical properties, weather resistance, and dielectric breakdown strength. It is used in aircraft parts.

➤ **Pretreatment:**
A portion of sample was cut into approx. 5 mm pieces using nippers.



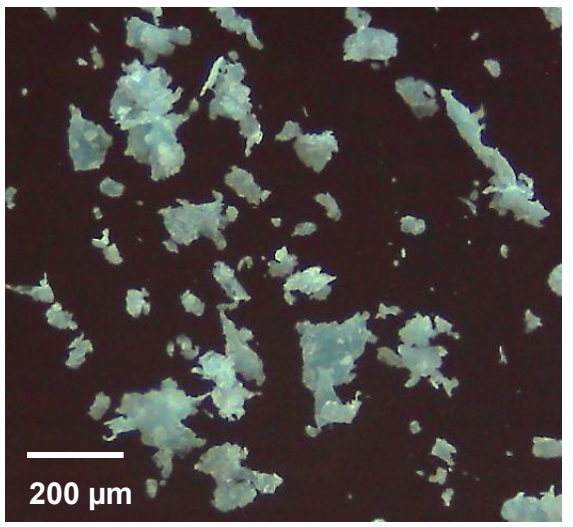
PEI 0.53 g

Sample amount (g)	Room temp. /Cryogenic	Sample container	Grinding ball
0.53	Room temp.	Sample container L-Ti	WC-12Φ



Grinding conditions				No. of repetitions
Milling speed (rpm)	Grinding time (sec)	Pause time (sec)	No. of cycles (Cycle)	
2800	20	20	10	1

(<40 mesh, yield: 92 %)



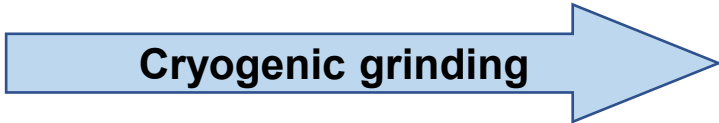
*40 mesh= 0.42 mm opening

➤ **Pretreatment:**
Copy paper is cut with a knife to about 10 mm in size as shown below.

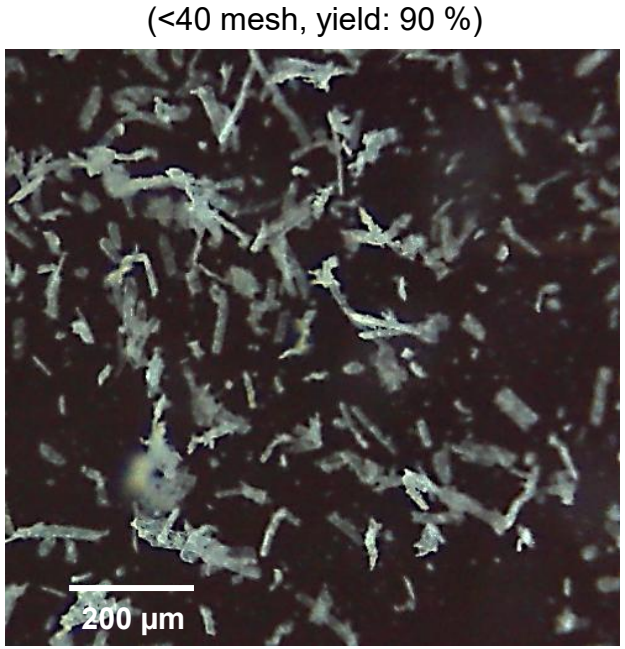


Copy paper 0.23 g

Sample amount (g)	Room temp. /Cryogenic	Sample container	Grinding ball
0.23	Cryogenic	Sample container L-Ti	WC-12Φ



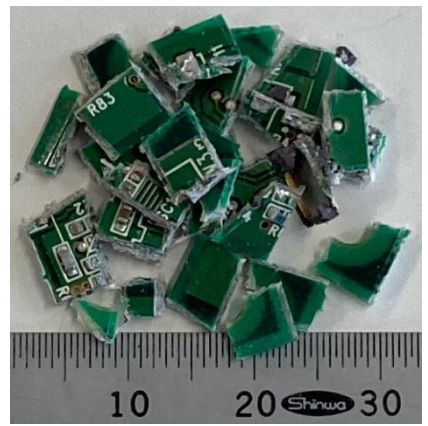
Grinding conditions				No. of repetitions
Milling speed (rpm)	Grinding time (sec)	Pause time (sec)	No. of cycles (Cycle)	
2800	20	0	1	1



(<40 mesh, yield: 90 %)

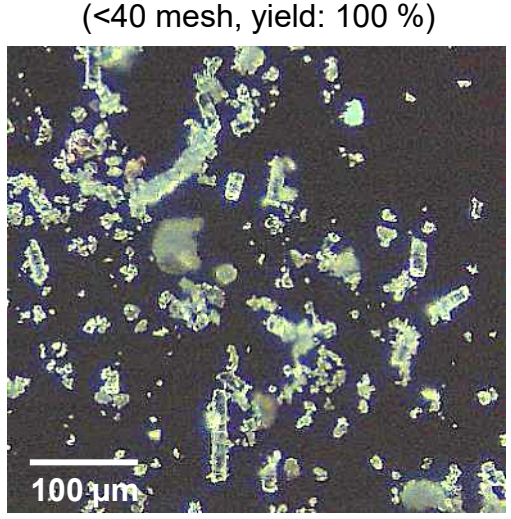
*40 mesh= 0.42 mm opening

➤ **Pretreatment:**
 Portions of a circuit board are cut into approx. 10 mm pieces using nippers.



Electronic circuit boards (2.1 g)

Room temp. grinding



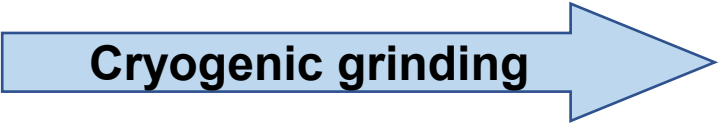
*40 mesh= 0.42 mm opening

Grinding ball WC-10Φ was selected:
 When WC-12Φ was used, the grinding ball was stuck between pieces of the circuit board, making them ungrindable.

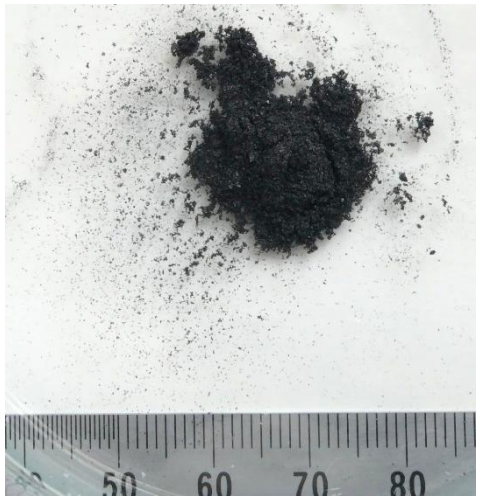
Sample amount (g)	Room temp./Cryogenic	Sample container	Grinding ball	Milling speed	Grinding time	Pause time	No. of cycles	No. of repetitions
				(rpm)	(sec)	(sec)	(Cycle)	
2.1	Room temp.	Sample container L-Ti	WC-10Φ	2500	30	20	10	1



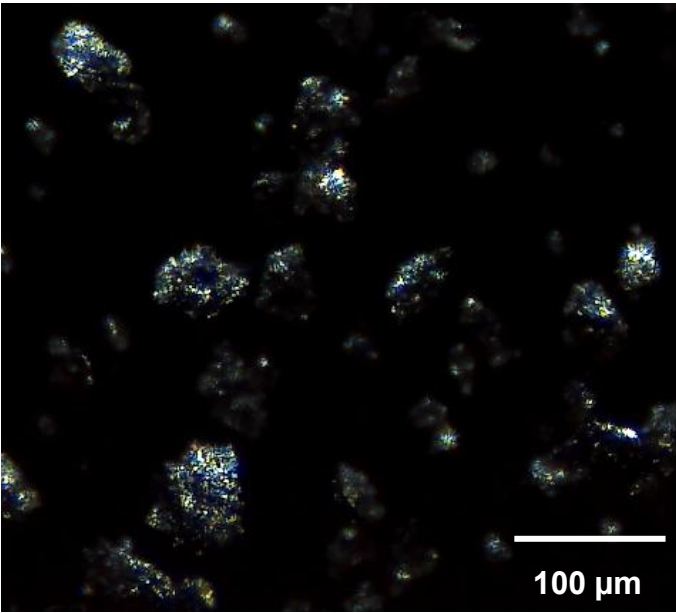
Sample amount (g)	Room temp./Cryogenic	Sample container	Grinding ball
0.06	Cryogenic	Sample container L-Ti	WC-6Φ x 5



Grinding conditions				No. of repetitions
Milling speed	Grinding time	Pause time	No. of cycles	
(rpm)	(sec)	(sec)	(Cycle)	
2800	30	0	1	1



(<40 mesh, yield:99%)



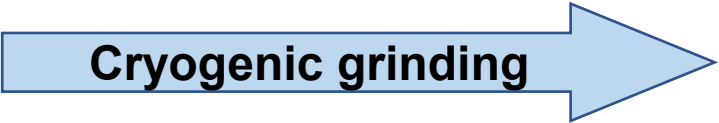
Sample courtesy of Institute for Plastics and Recycling Technology (Leibniz Universität Hannover)

*40 mesh=0.42 mm opening

Polyethylene (PE) form [Cryomilling]



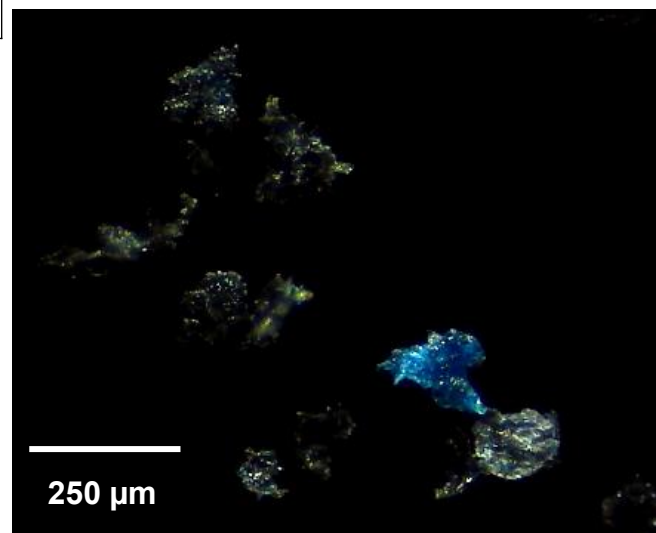
Sample amount (g)	Room temp./Cryogenic	Sample container	Grinding ball
0.17	Cryogenic	Sample container L-Ti	WC-6Φ x 5



Grinding conditions				No. of repetitions ^{*2}
Milling speed	Grinding time	Pause time	No. of cycles	
(rpm)	(sec)	(sec)	(Cycle)	
3000	30	0	1	6

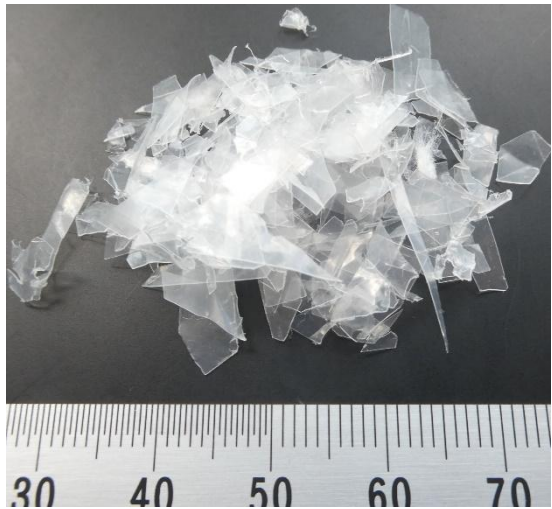


(<40 mesh, yield: 77%)

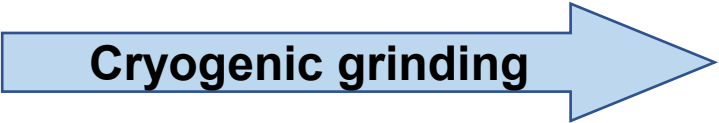


Sample courtesy of Institute for Plastics and Recycling Technology (Leibniz Universität Hannover)

*1: Ethanol was added to the grinding container to prevent aggregation due to static electricity before recovery.
 *2: Immersion in liquid nitrogen followed by grinding is considered one repetition. The initial immersion time in liquid nitrogen is 10 minutes, while subsequent immersion times are 5 minutes.



Sample amount (g)	Room temp./Cryogenic	Sample container	Grinding ball
0.3	Cryogenic	Sample container L-Ti	WC-12Φ

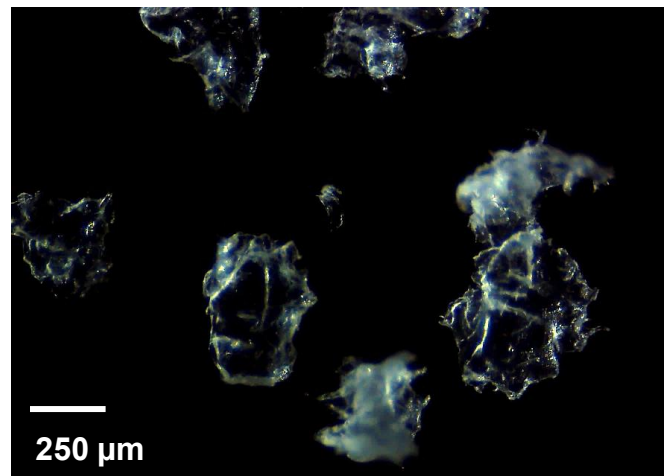


Grinding conditions				No. of repetitions
Milling speed	Grinding time	Pause time	No. of cycles	
(rpm)	(sec)	(sec)	(Cycle)	
3000	30	0	1	2



(<40 mesh, yield: 47%)

Sample courtesy of Institute for Plastics and Recycling Technology (Leibniz Universität Hannover)



*40 mesh=0.42 mm opening

Polyamide fiber [Room temp.]



Sample amount (g)	Room temp./Cryogenic	Sample container	Grinding ball
0.4	Room temp.	Sample container L-Ti	WC-6 x 5

Room temp. grinding

Grinding conditions				No. of repetitions
Milling speed (rpm)	Grinding time (sec)	Pause time (sec)	No. of cycles (Cycle)	
2800	30	60	3	1

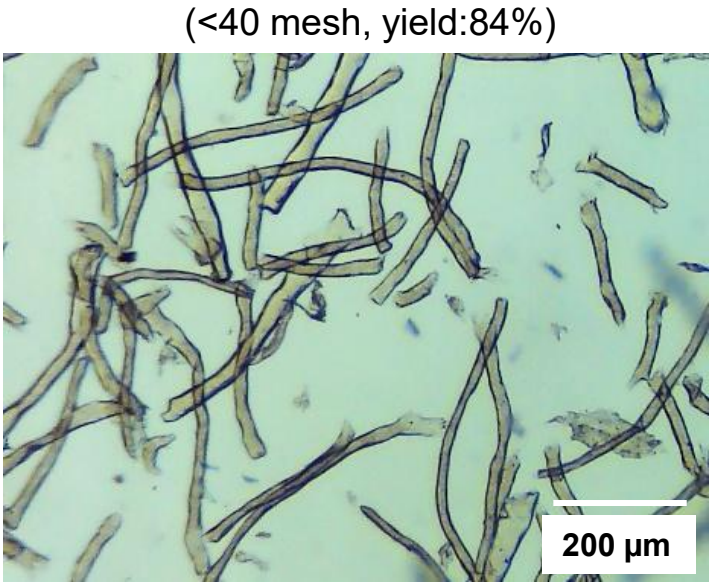
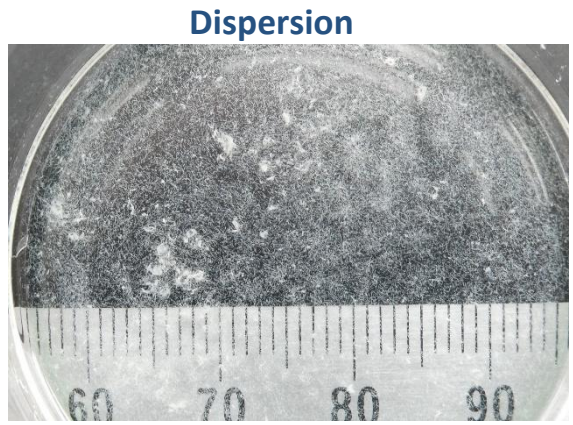


Sample courtesy of Institute for Plastics and Recycling Technology (Leibniz Universität Hannover)

***1: Fiber aggregates**



Ethanol added



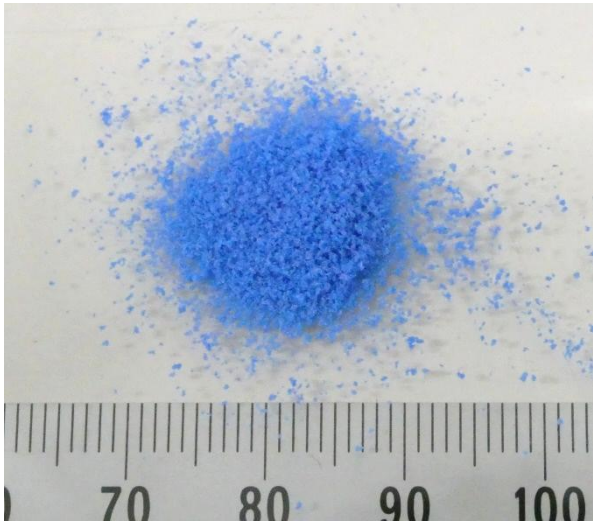
➤ **Pretreatment:** Nitril glove is cut with scissors to the appropriate size.



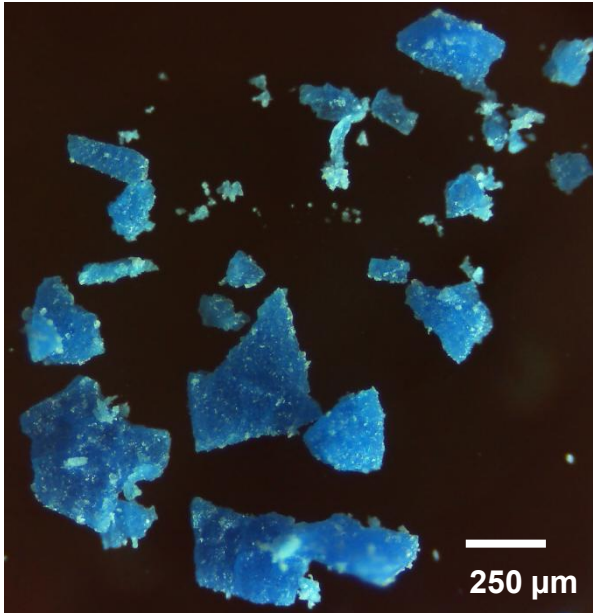
Sample amount (g)	Room temp. /Cryogenic	Sample container	Grinding ball
0.42	Cryogenic	L-SS	WC-12Φ

Cryogenic grinding →

Grinding conditions				No. of repetitions
Milling speed	Grinding time	Pause time	No. of cycles	
(rpm)	(sec)	(sec)	(Cycle)	
2800	10	0	1	2

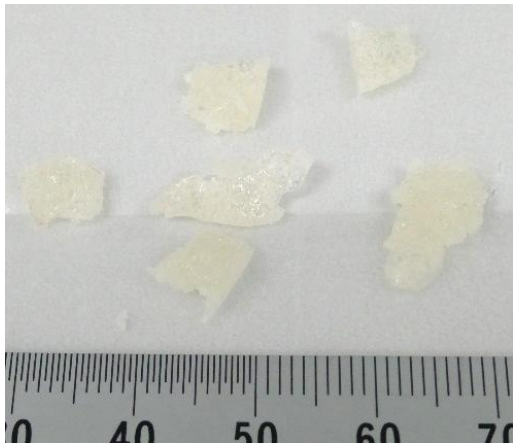


(<40 mesh, yield: 99 %)



*40 mesh= 0.42 mm opening

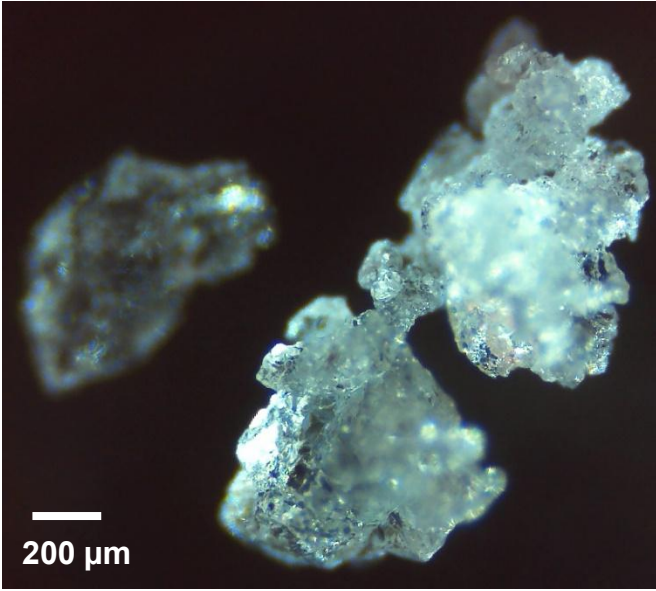
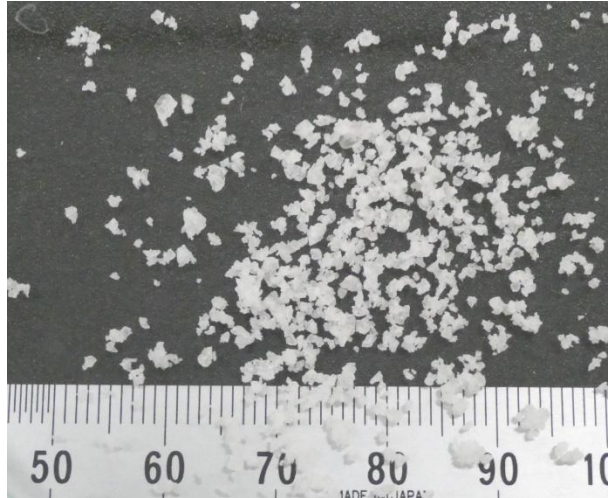
➤ **Pretreatment:** SBR is cut into 3-5 mm pieces with nippers.



Sample amount (g)	Room temp. /Cryogenic	Sample container	Grinding ball
0.46	Cryogenic	L-SS	WC-12Φ

Cryogenic grinding →

Grinding conditions				No. of repetitions
Milling speed (rpm)	Grinding time (sec)	Pause time (sec)	No. of cycles (Cycle)	
2800	10	0	1	2



➤ **Pretreatment:** Cardboard is cut with scissors to the appropriate size.



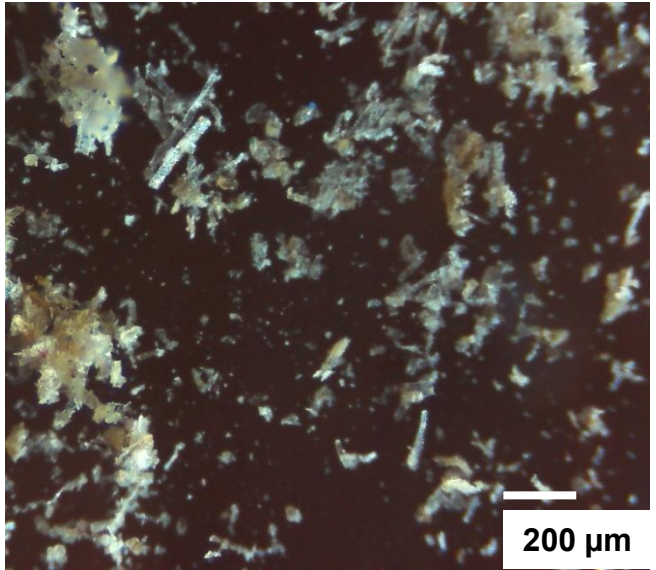
Sample amount (g)	Room temp. /Cryogenic	Sample container	Grinding ball
0.19	Cryogenic	L-SS	Zr-12Φ

Cryogenic grinding →

Grinding conditions				No. of repetitions
Milling speed	Grinding time	Pause time	No. of cycles	
(rpm)	(sec)	(sec)	(Cycle)	
2800	10	0	1	2



(<40 mesh, yield: 93 %)



*40 mesh= 0.42 mm opening

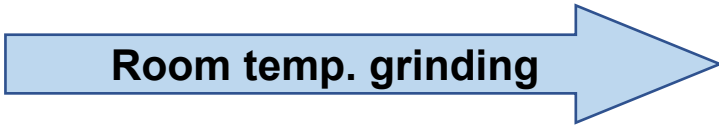
Characteristics: Wild boar teeth are enamel, hard as crystal, and very difficult to crush. These were used to study the effects of strontium in the 2011 Fukushima nuclear accident.

➤ **Pretreatment:**
Canine teeth are cut into 3-5 mm pieces with nippers.



Canine tooth

Sample amount (g)	Room temp. /Cryogenic	Sample container	Grinding ball
1 canine tooth	Room temp.	Sample container L-Ti	Zr-6Φ x 1



Grinding conditions				No. of repetitions
Milling speed (rpm)	Grinding time (sec)	Pause time (sec)	No. of cycles (Cycle)	
1500	60	10	3	1



Sample courtesy of prof. H. Ishiniwa (Fukushima University)

Tooth of fox, raccoon and raccoon dog [Room temp.]

Characteristics: The teeth of these animals are enamel, as hard as quartz, making them very hard, and extremely difficult to grind. They were used in a study of the 2011 Fukushima nuclear accident impact to investigate the impact of the strontium.

➤ **Pretreatment:** A tooth is cut into 3-5 mm pieces with nippers.



Sample courtesy of prof. Y. Takagai (Fukushima University)

Sample amount (g)	Room temp. /Cryogenic	Sample container	Grinding ball
1 canine tooth	Room temp.	Sample container L-Ti	Zr-12Φ x 1

Room temp. grinding

Grinding conditions				No. of repetitions
Milling speed (rpm)	Grinding time (sec)	Pause time (sec)	No. of cycles (Cycle)	
2000	20	10	2	1

After grinding of fox teeth (Other teeth are similarly ground.)



5 cm

Clam

Turban shell



Room temp. grinding



➤ **Pretreatment**
 Samples are cut into about 10 mm pieces using nippers.

Sample amount (g)	Room temp. /Cryogenic	Sample container	Grinding ball
2.0	Room temp.	Sample container L-Ti	Zr-12Φ

Grinding conditions				No. of repetitions
Milling speed (rpm)	Grinding time (sec)	Pause time (sec)	No. of cycles (Cycle)	
2500	20	20	4	1

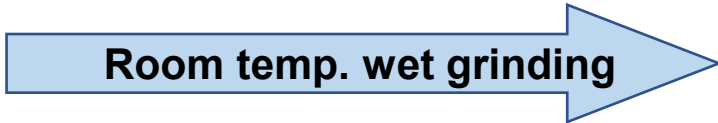
This is difficult to grind. Used for DNA research.

Disposal PP Container (2 mL):
DNeasy® Plant Mini Kit Buffer solution 0.3 mL

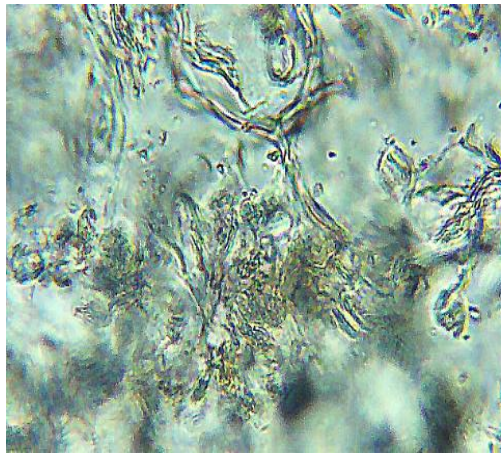
Sample amount (g)	Room temp. /Cryogenic	Sample container	Grinding ball
0.53	Room temp./wet	Disposable PP Container (2 mL)	Zr-5Φ x 1 Zr-3Φ x 1



Sample courtesy of prof. S. Kaneko (Fukushima University)

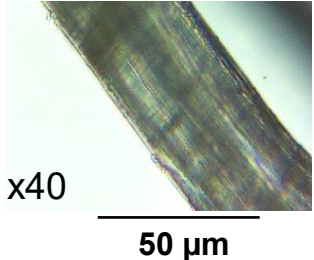


Grinding conditions				No. of repetitions
Milling speed (rpm)	Grinding time (sec)	Pause time (sec)	No. of cycles (Cycle)	
2000	10	10	2	1



x40
50 μm

➤ **Pretreatment:** Hemp twines are cut into 3-5 mm pieces with scissors.



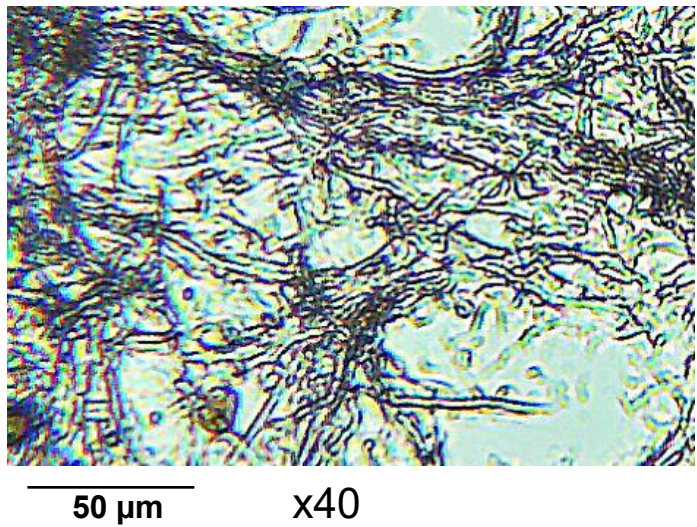
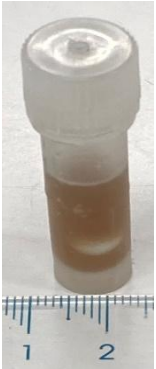
Approx. 10 mm; 7.7 mg
(Before cutting)

Container: Disposable PP Container (2 mL): Distilled water 1.0 mL

Sample amount (g)	Room temp. /Cryogenic	Sample container	Grinding ball
0.53	Room temp. wet	Disposable PP container	Zr-6 Φ x 2

Room temp. wet grinding

Grinding conditions				No. of repetitions
Milling speed (rpm)	Grinding time (sec)	Pause time (sec)	No. of cycles (Cycle)	
1500	60	10	10	1



➤ **Pretreatment:** Toothpicks are cut into 5 mm pieces with nippers.

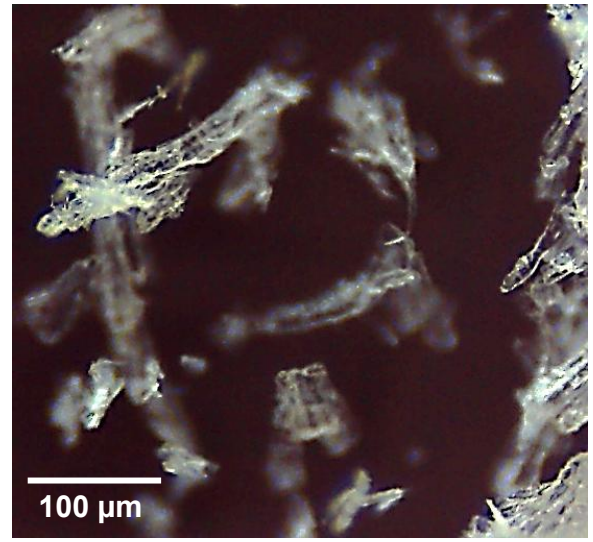


Wood chips 0.32 g

Sample amount (g)	Room temp. /Cryogenic	Sample container	Grinding ball
0.32	Room temp.	Sample container L-Ti	Zr-12Φ

Room temp. grinding

Grinding conditions				No. of repetitions
Milling speed (rpm)	Grinding time (sec)	Pause time (sec)	No. of cycles (Cycle)	
2800	30	20	3	1



➤ **Pretreatment** : A piece of cotton is cut into 3-5 mm pieces with scissors.



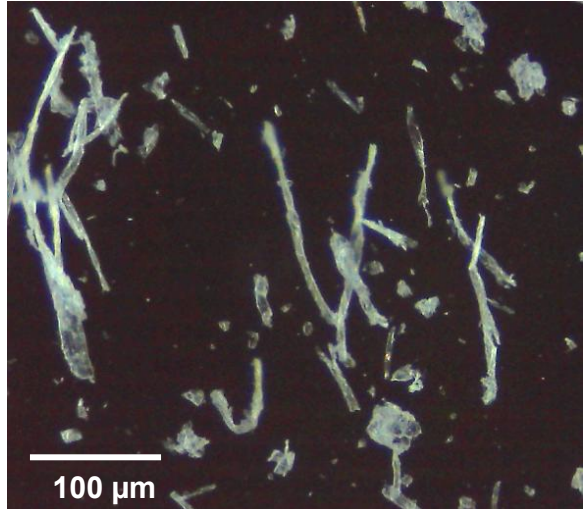
Cotton 0.21 g

Sample amount (g)	Room temp. /Cryogenic	Sample container	Grinding ball
0.21	Room temp.	Sample container L-Ti	WC-12Φ

Room temp. grinding

Grinding conditions				No. of repetitions
Milling speed (rpm)	Grinding time (sec)	Pause time (sec)	No. of cycles (Cycle)	
2800	20	20	10	1

(<40 mesh, yield: 92 %)



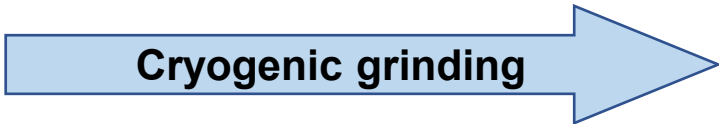
*40 mesh= 0.42 mm opening

➤ **Pretreatment:**
Dried squid is cut into 3-5 mm pieces with nippers.

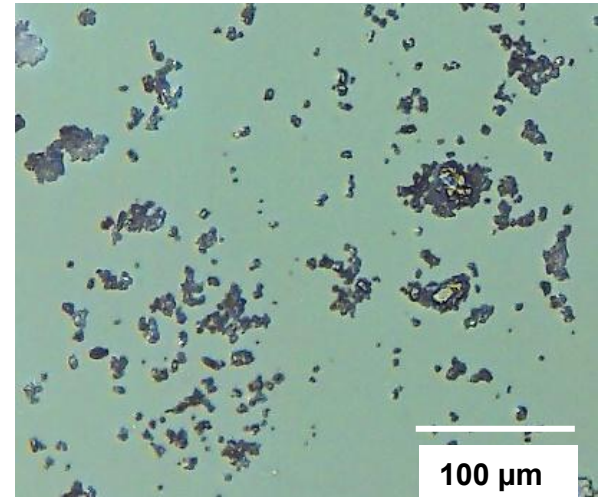


* A thin PC insert tube is installed in the container.

Sample amount (g)	Room temp. /Cryogenic	Sample container	Grinding ball
0.61	Cryogenic	Sample container L-Ti	WC-12Φ



Grinding conditions				No. of repetitions
Milling speed	Grinding time	Pause time	No. of cycles	
(rpm)	(sec)	(sec)	(Cycle)	
2800	30	0	1	1

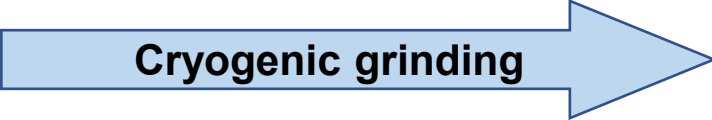


➤ **Pretreatment:**
Beef jerky is cut into 3-5 mm pieces with nippers.

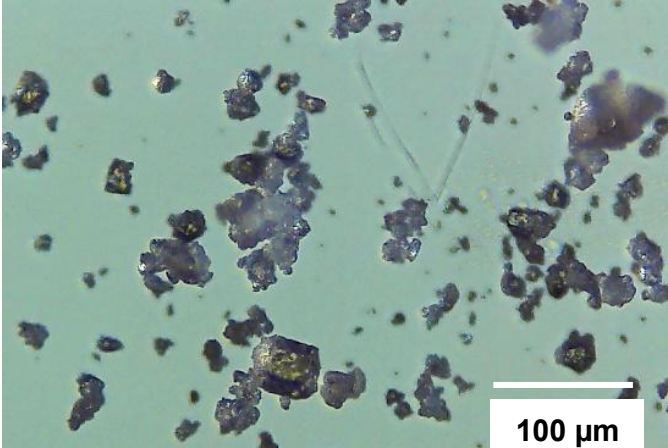
* A thin PC insert tube is installed in the container.



Sample amount (g)	Room temp. /Cryogenic	Sample container	Grinding ball
1.4	Cryogenic	Sample container L-Ti	WC-12Φ



Grinding conditions				No. of repetitions
Milling speed (rpm)	Grinding time (sec)	Pause time (sec)	No. of cycles (Cycle)	
2800	30	0	1	1



➤ **Pretreatment:** A shell string is cut into 3-5 mm pieces with nippers.



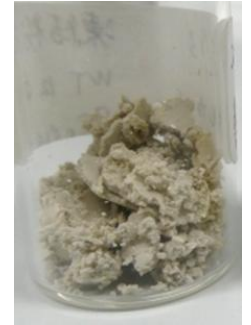
* A thin PC insert tube is installed in the container.

Sample amount (g)	Room temp. /Cryogenic	Sample container	Grinding ball
0.84	Cryogenic	Sample container L-Ti	WC-12Φ

Cryogenic grinding

Grinding conditions				No. of repetitions
Milling speed	Grinding time	Pause time	No. of cycles	
(rpm)	(sec)	(sec)	(Cycle)	
2800	30	0	1	1

Clay-like solids



Vacuum Dry

Temp. (°C)	Drying time (hour)
40	24

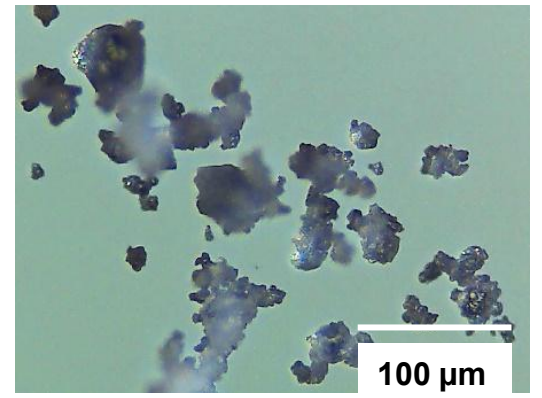


Room temp. grinding

After room temp. grinding



Milling speed	Grinding time	Pause time	No. of cycles
(rpm)	(sec)	(sec)	(Cycle)
1500	10	0	1



➤ **Pretreatment:** A piece of sea squirt is cut into about 3-5 mm pieces with nippers.

* A thin PC insert tube is installed in the container.

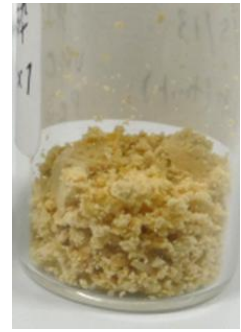


Sample amount (g)	Room temp. /Cryogenic	Sample container	Grinding ball
0.76	Cryogenic	Sample container L-Ti	WC-12Φ

Cryogenic grinding

Grinding conditions				No. of repetitions
Milling speed	Grinding time	Pause time	No. of cycles	
(rpm)	(sec)	(sec)	(Cycle)	
2800	30	0	1	1

Clay-like solids



Vacuum Dry

Temp. (°C)	Drying time (hour)
40	24

Powder lumps

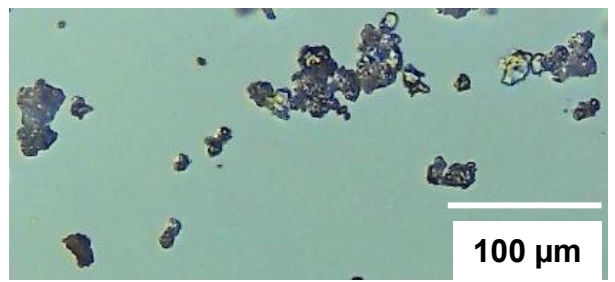


Room temp. grinding

After room temp. grinding

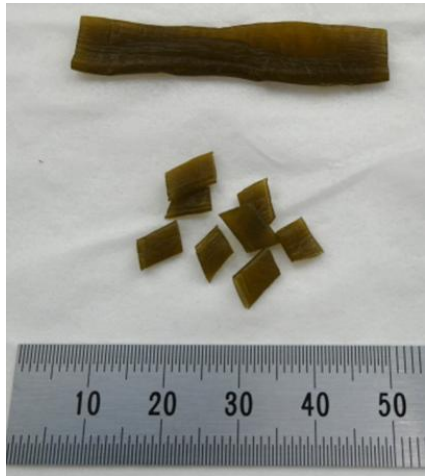


Milling speed	Grinding time	Pause time	No. of cycles
(rpm)	(sec)	(sec)	(Cycle)
1500	10	0	1



➤ **Pretreatment:** Wakame stem is cut into 3-5 mm pieces with nippers.

* A thin PC insert tube is installed in the container.



Sample amount (g)	Room temp. /Cryogenic	Sample container	Grinding ball
1.1	Cryogenic	Sample container L-Ti	WC-12Φ

Cryogenic grinding

Grinding conditions				No. of repetitions
Milling speed	Grinding time	Pause time	No. of cycles	
(rpm)	(sec)	(sec)	(Cycle)	
2800	30	0	1	1

Paste-like solids



Vacuum Dry

Temp. (°C)	Drying time (hour)
40	24

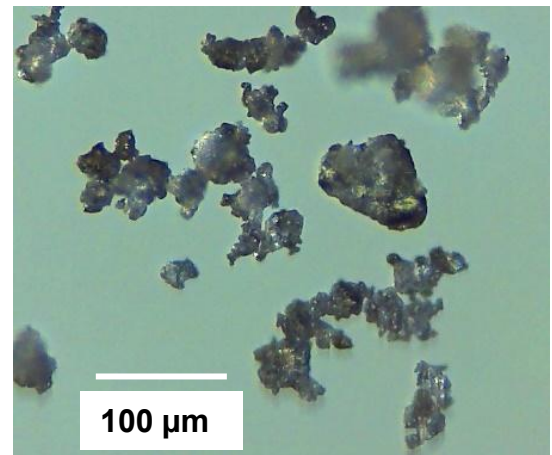


Room temp. grinding

After room temp. grinding



Milling speed	Grinding time	Pause time	No. of cycles
(rpm)	(sec)	(sec)	(Cycle)
2500	10	1	1



➤ **Pretreatment:** Almond shells are crushed in a vise.



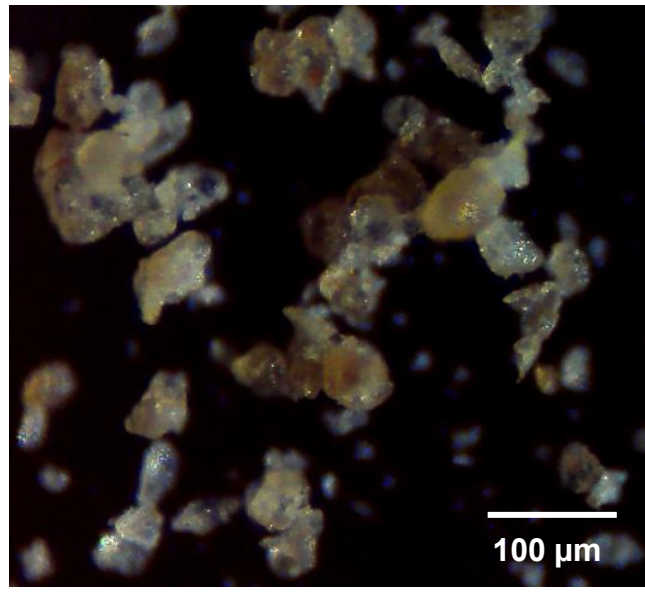
Sample amount (g)	Room temp./Cryogenic	Sample container	Grinding ball
0.93	Room temp.	Sample container L-Ti	Zr-12Φ

Room temp. grinding

Grinding conditions				No. of repetition
Milling speed	Grinding time	Pause time	No. of cycles	
(rpm)	(sec)	(sec)	(cycle)	
2800	30	0	1	1



(< 40 mesh, yield : 76%)



*40 mesh=0.42 mm opening

Almond seed (edible part) [Room temp.]

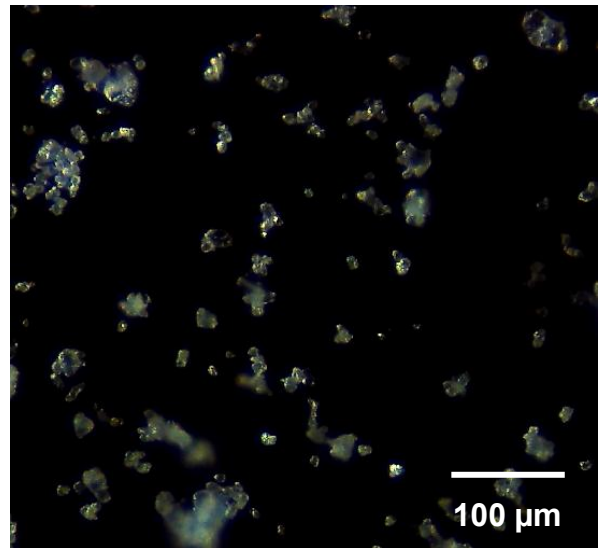
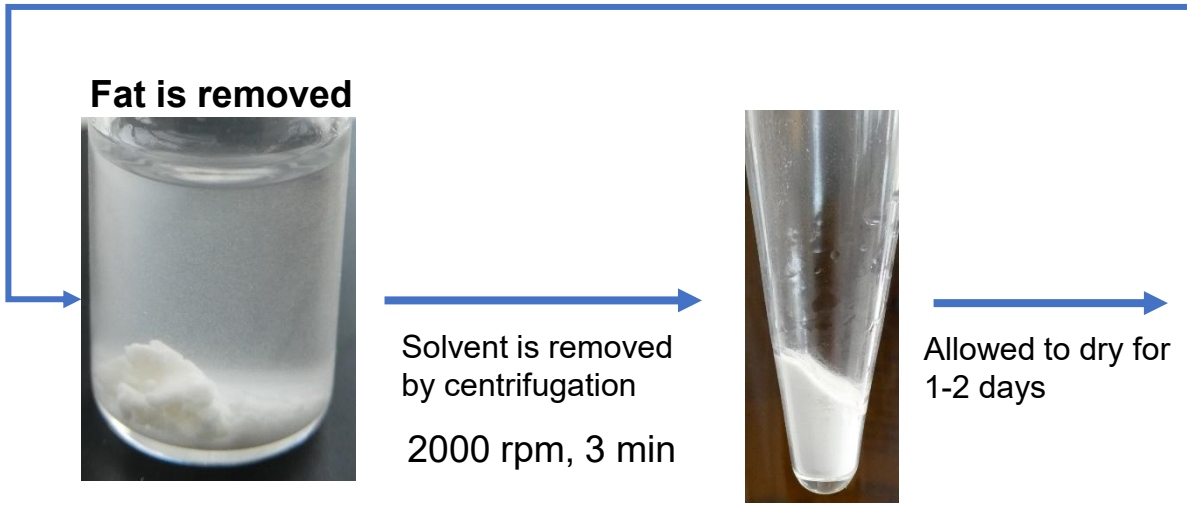
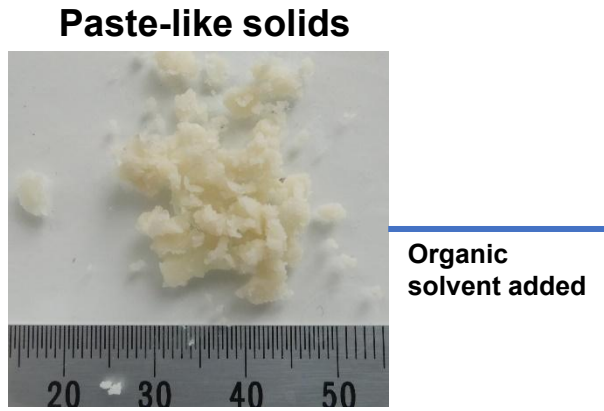
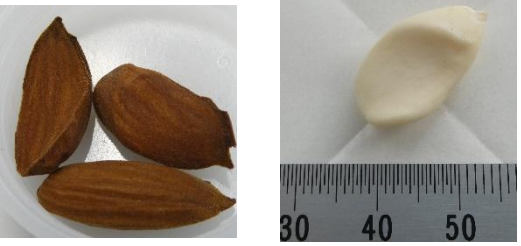
➤ **Pretreatment:** Skin is peeled off with a knife.

*A thin PC insert tube installed inside the container

Sample amount (g)	Room temp./Cryogenic	Sample container	Grinding ball
0.57	Room temp.	Sample container L-Ti	WC-12Φ

Room temp. grinding →

Grinding conditions				No. of repetition
Milling speed (rpm)	Grinding time (sec)	Pause time (sec)	No. of cycles (Cycle)	
2500	20	0	1	1



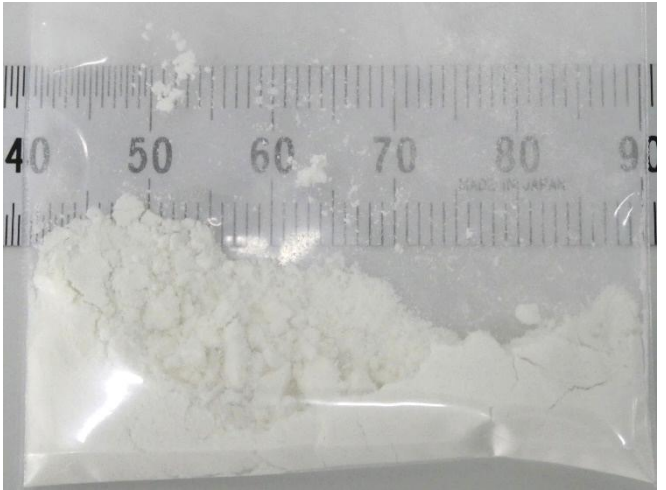
➤ **Pretreatment:** A candy is cut in half with nippers.



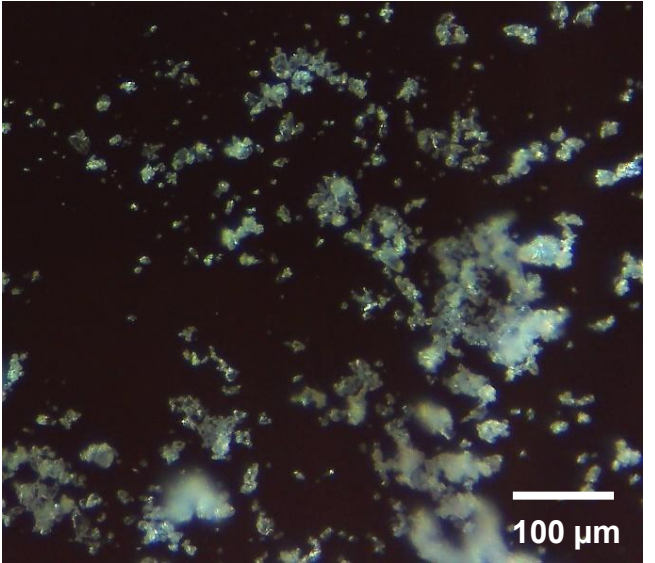
Sample amount (g)	Room temp. /Cryogenic	Sample container	Grinding ball
1.34	Room temp.	L-SS	Zr-12Φ

Room temp. grinding

Grinding conditions				No. of repetitions
Milling speed	Grinding time	Pause time	No. of cycles	
(rpm)	(sec)	(sec)	(Cycle)	
2800	10	0	1	1



(<40 mesh, yield: 99 %)



*40 mesh= 0.42 mm opening

[Minute amount] Leaves of houseplants [Cryomilling]

➤ **Pretreatment:** A leaf is cut with scissors to the appropriate size.

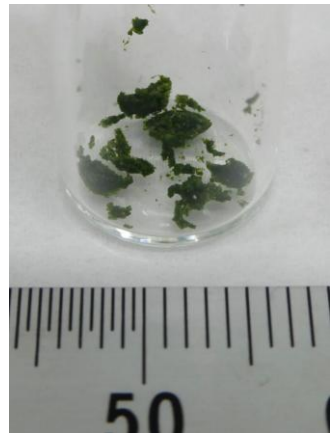


Sample amount (mg)	Room temp. /Cryogenic	Sample container	Grinding ball
18	Cryogenic	S-SS	Zr-5Φ × 1 pcs.

Cryogenic grinding →

Grinding conditions				No. of repetitions
Milling speed (rpm)	Grinding time (sec)	Pause time (sec)	No. of cycles (Cycle)	
2000	10	0	1	2

Paste-like solids



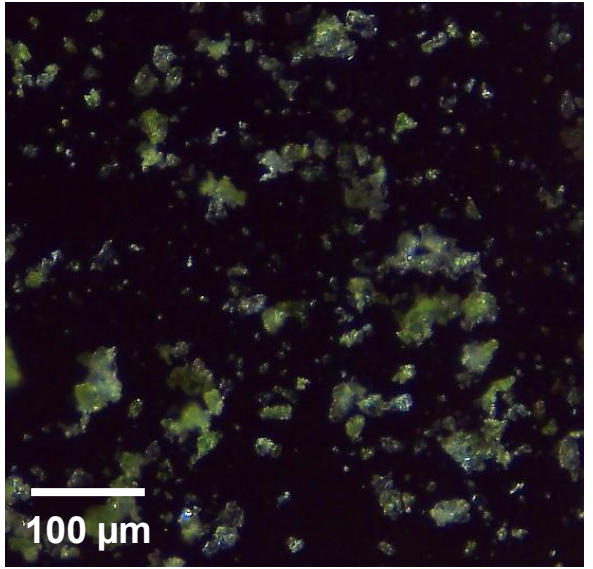
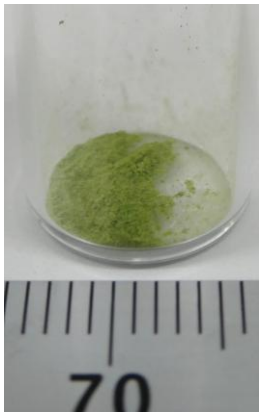
Allowed to dry at room temp.
or
Vacuum Dry →

Temp. (°C)	Drying time (hour)
40	2

→ **Room temp. grinding** →

Milling speed (rpm)	Grinding time (sec)	Pause time (sec)	No. of cycles (Cycle)
1500	10	0	1

After room temp. grinding



Glossary

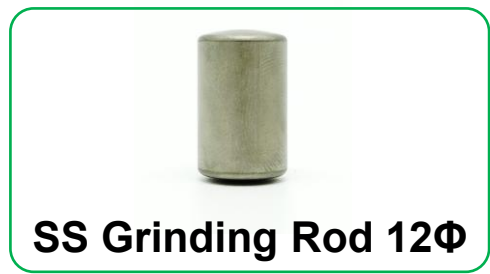
Term	Description
PC insert tube	Polycarbonate tube that is inserted to sample container.
Disposable PP container	Disposable polypropylene container
Sample container L-Ti	Sample container, large, made of titanium
Sample container L-SS	Sample container, large, made of hardened stainless steel
WC-12Φ grinding ball	Tungsten carbide (WC) grinding ball, 12 mm diameter
Zr-12Φ grinding ball	Zirconia or zirconium dioxide (ZrO ₂) grinding ball, 12 mm diameter
Milling speed	Grinding speed or rotation speed of motor
Grinding time	Time during which sample is ground
Pause time	Time between runs or time during which grinding is stopped
No. cycles	No. of grinding sequences including grinding time and pause.
No. of repetitions	No. of whole programmed grinding cycles that can include liquid nitrogen cooling, grinding, and pause time when cryomilling.



Teacup (Mohs hardness : ca.5) [Room Temp.]

➤ Pretreatment: Teacup is cut into 5 mm pieces with nippers.

Ref. Mohs hardness of the diamond : 10



Sample amount (g)	Room temp. /Cryogenic	Sample container	Grinding ball
1.1	Room temp.	L-SS	SS Grinding Rod 12Φ

Room temp. grinding

Grinding conditions				No. of repetitions
Milling speed	Grinding time	Pause time	No. of cycles	
(rpm)	(sec)	(sec)	(Cycle)	
2000	40	0	1	1

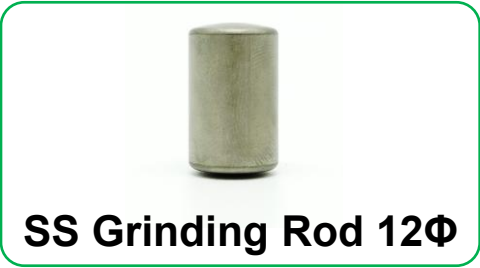


- ※1. Sieved through 40 μm after grinding
- ※2. The inside surface of the Sample container may be damaged

Fused quartz (Mohs hardness : 7) 【Room Temp.】

➤ Pretreatment: Fused quartz is cut into 5 mm pieces with nippers.

Ref. Mohs hardness of the diamond : 10



SS Grinding Rod 12Φ



Sample amount (g)	Room temp. /Cryogenic	Sample container	Grinding ball
1.0	Room temp.	L-SS	SS Grinding Rod 12Φ

Room temp. grinding

Grinding conditions				No. of repetitions
Milling speed	Grinding time	Pause time	No. of cycles	
(rpm)	(sec)	(sec)	(Cycle)	
2000	40	0	1	1



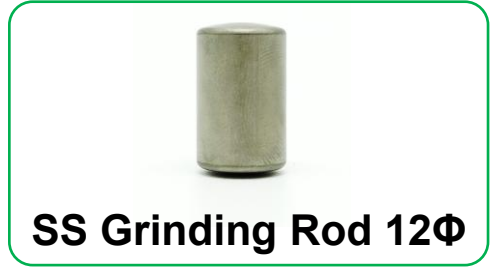
- ※1. Sieved through 40 μm after grinding
- ※2. The inside surface of the Sample container may be damaged

Sand* (Mohs hardness : 6 ~ 7) [Room Temp.]

*** Main components of Sand**

- Hornblende (Mohs hardness : 6.5)
- Feldspar (Mohs hardness : 7)
- Quartz (Mohs hardness : 7)

Ref. Mohs hardness of the diamond : 10



SS Grinding Rod 12Φ



Sample amount (g)	Room temp. /Cryogenic	Sample container	Grinding ball
1.5	Room temp.	L-SS	SS Grinding Rod 12Φ

Room temp. grinding

Grinding conditions				No. of repetitions
Milling speed	Grinding time	Pause time	No. of cycles	
(rpm)	(sec)	(sec)	(Cycle)	
2800	20	0	1	1

(<60 μm, yield:83 %)

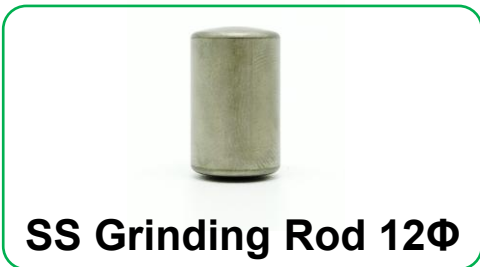


- ※1. Sieved through 60 μm after grinding
- ※2. The inside surface of the Sample container may be damaged

Ceramic (Al_2O_3 , Mohs hardness : 9) 【Room Temp.】

➤ Pretreatment: Ceramic is cut into 10 mm pieces with nippers.

Ref. Mohs hardness of the diamond : 10



SS Grinding Rod 12Φ

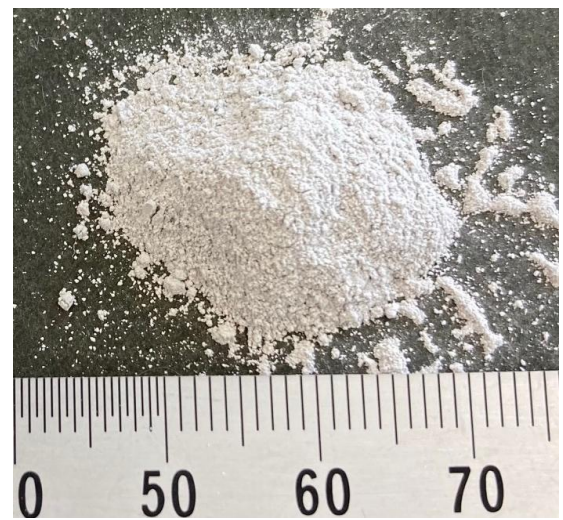
(<60 μm, yield:75 %)



Sample amount (g)	Room temp. /Cryogenic	Sample container	Grinding ball
1.5	Room temp.	L-SS	SS Grinding Rod 12Φ

Room temp. grinding

Grinding conditions				No. of repetitions
Milling speed (rpm)	Grinding time (sec)	Pause time (sec)	No. of cycles (Cycle)	
2800	20	0	1	1



※1. Sieved through 60 μm after grinding

※2. The inside surface of the Sample container may be damaged