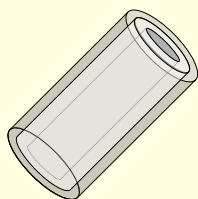


# The world's first large-capacity solid-phase extraction device! Polar Magic Chemisorber (MC-PEG)

This is an innovative solid-phase extraction device having PEG (polyethylene glycol) as a stationary phase. It features a high selectivity toward alcohols and carboxylic acids.

## Features

PEG layer immobilized on the outer wall of a deactivated stainless steel tube.

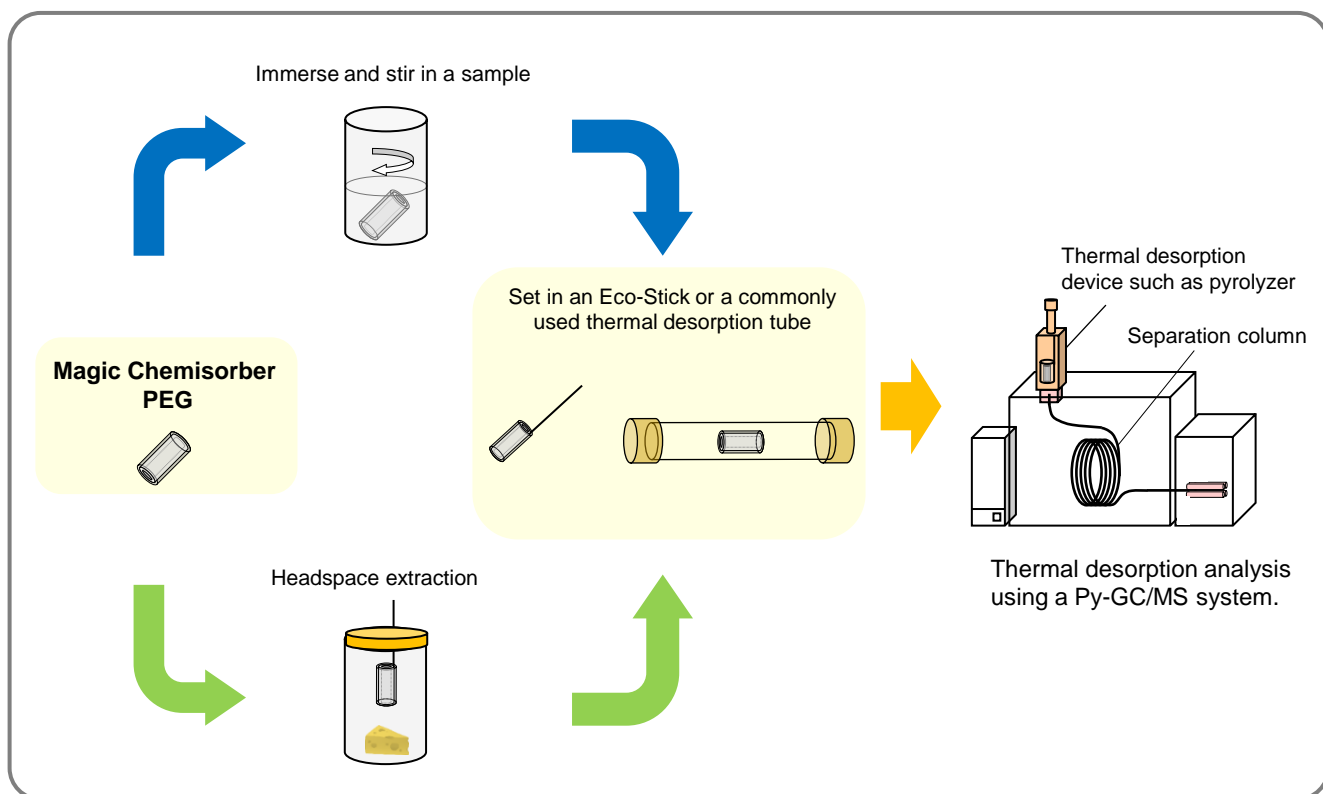


(Film thickness: 30 μm)

- High selectivity toward polar compounds
- Quick and simple sample pretreatment at low cost
- Repeatedly usable
- Fit to sample tubes for thermal desorption devices from various manufacturers\*  
\* Shimadzu, PerkinElmer, DANI, Gerstel, Markes, and etc.
- Two sizes available for your application

## Using Magic Chemisorber PEG (MC-PEG)

The MC-PEG is allowed to suspend or is stirred in a sample (gas, liquid or solid) under given conditions to extract the target compounds. The thermal desorption (TD)-GC analysis is then performed using a thermal desorption device such as pyrolyzer. The MC-PEG is usually cleaned automatically during GC analysis; therefore, it can be reused immediately for the next sample run.

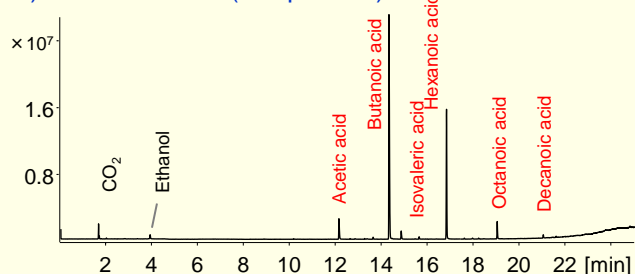


# Analysis examples using polar MC-PEG and non-polar MC-PDMS

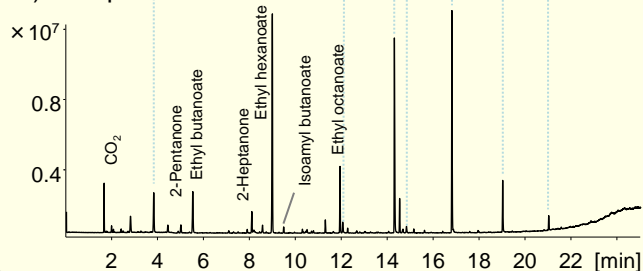
## Headspace analysis of cheese

Note the selectivity for polar compounds!

### 1) Polar MC-PEG (this product)



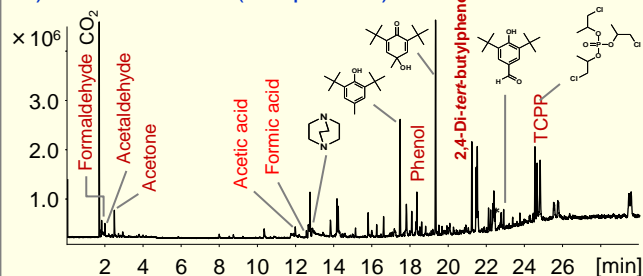
### 2) Non-polar MC-PDMS



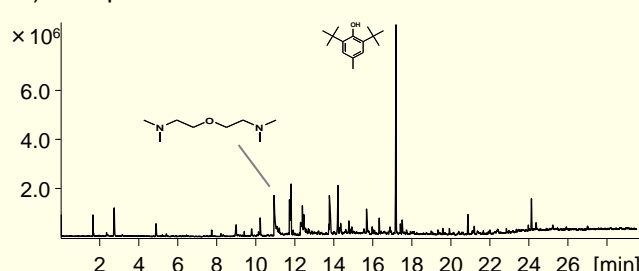
## Odor analysis of a new car

Note the selectivity for polar compounds!

### 1) Polar MC-PEG (this product)



### 2) Non-polar MC-PDMS



See our Technical Notes [MCA-015](#) and [MCA-016](#) on our website for more details of the analytical conditions for the analysis examples above.

## Specifications



	MC-PEG-S	MC-PEG-L
Length	10 mm	12.5 mm
Outer diameter	2.0 mm	3.2 mm
Inner diameter	1.4 mm	1.9 mm
Film thickness	30 µm	
Stationary phase	Polyethylene glycol	
Main material (core)	Deactivated stainless steel	
Max use temperature	250 °C (He)	

Product name	Product number	Contents
Magic Chemisorber PEG-S	PY1-MC04PS	Magic Chemisorber PEG-S (5 ea.)
Magic Chemisorber PEG-S Kit	PY1-MC04PS-K	Magic Chemisorber PEG-S (5 ea.) Eco-stick DF (5 ea.) Flow through Eco-cup LHF (5 ea.)
Magic Chemisorber PEG-L	PY1-MC04P	Magic Chemisorber PEG-L (5 ea.)
Magic Chemisorber PEG Kit	PY1-MC04P-K	Magic Chemisorber PEG (5 ea.) Eco-stick GD (5 ea.)
Magic Chemisorber PEG-SL Kit	PY1-MC04PSL-K	Magic Chemisorber PEG-S (2 ea.) Magic Chemisorber PEG-L (2 ea.)

\* Visit our website for details of [non-polar Magic Chemisorber \(MC-PDMS\)](#) of which stationary phase is polydimethylsiloxane.